

VPS24 antibody - N-terminal region

Rabbit Polyclonal Antibody

Catalog # AI10647

Product Information

Application	WB
Primary Accession	Q3ZTS9
Other Accession	NM_016079 , NP_057163
Reactivity	Human, Mouse, Rat, Zebrafish, Pig, Dog, Bovine
Predicted	Chicken
Host	Rabbit
Clonality	Polyclonal
Calculated MW	25 KDa

Additional Information

Alias Symbol	NEDF, VPS24, CGI-149
Format	Liquid. Purified antibody supplied in 1x PBS buffer with 0.09% (w/v) sodium azide and 2% sucrose.
Reconstitution & Storage	Add 50 ul of distilled water. Final anti-VPS24 antibody concentration is 1 mg/ml in PBS buffer with 2% sucrose. For longer periods of storage, store at 20°C. Avoid repeat freeze-thaw cycles.
Precautions	VPS24 antibody - N-terminal region is for research use only and not for use in diagnostic or therapeutic procedures.

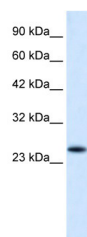
Protein Information

References

Whitley, P., et al., (2003) J Biol Chem. 278(40), 38786-95
Reconstitution and Storage: For short term use, store at 2-8°C up to 1 week. For long term storage, store at -20°C in small aliquots to prevent freeze-thaw cycles.

Images

WB Suggested Anti-VPS24 Antibody Titration: .2-1 ug/ml
ELISA Titer: 1:125
Positive Control: HepG2 cell lysate



Please note: All products are 'FOR RESEARCH USE ONLY. NOT FOR USE IN DIAGNOSTIC OR THERAPEUTIC PROCEDURES'.