

# CGI-143 antibody - N-terminal region

Rabbit Polyclonal Antibody  
Catalog # AI10653

## Product Information

---

<b>Application</b>	WB, IHC
<b>Primary Accession</b>	<a href="#">Q9Y3E2</a>
<b>Other Accession</b>	<a href="#">NM_016074</a> , <a href="#">NP_057158</a>
<b>Reactivity</b>	Human, Mouse, Rat, Rabbit, Zebrafish, Pig, Dog, Bovine
<b>Predicted</b>	Mouse, Rat, Zebrafish
<b>Host</b>	Rabbit
<b>Clonality</b>	Polyclonal
<b>Calculated MW</b>	14289

## Additional Information

---

<b>Gene ID</b>	51027
<b>Alias Symbol</b> <b>Other Names</b>	hBoIA, CGI-143, RP11-196G18.18 BoIA-like protein 1, hBoIA, BOLA1
<b>Format</b>	Liquid. Purified antibody supplied in 1x PBS buffer with 0.09% (w/v) sodium azide and 2% sucrose.
<b>Reconstitution &amp; Storage</b>	Add 50 ul of distilled water. Final anti-CGI-143 antibody concentration is 1 mg/ml in PBS buffer with 2% sucrose. For longer periods of storage, store at 20°C. Avoid repeat freeze-thaw cycles.
<b>Precautions</b>	CGI-143 antibody - N-terminal region is for research use only and not for use in diagnostic or therapeutic procedures.

## Protein Information

---

<b>Name</b>	BOLA1 ( <a href="#">HGNC:24263</a> )
<b>Function</b>	Acts as a mitochondrial iron-sulfur (Fe-S) cluster assembly factor that facilitates (Fe-S) cluster insertion into a subset of mitochondrial proteins (By similarity). Probably acts together with the monothiol glutaredoxin GLRX5 (PubMed: <a href="#">27532772</a> ). May protect cells against oxidative stress (PubMed: <a href="#">22746225</a> ).
<b>Cellular Location</b>	Mitochondrion.
<b>Tissue Location</b>	Widely expressed..

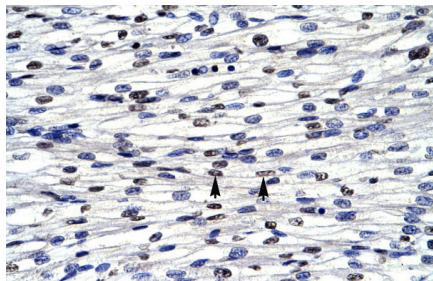
## References

---

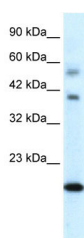
Strausberg,R.L., et al., (2002) Proc. Natl. Acad. Sci. U.S.A. 99 (26), 16899-16903  
Reconstitution and Storage: For short term use, store at 2-8C up to 1 week. For long term storage, store at -20C in small aliquots to prevent freeze-thaw cycles.

## Images

---



Human Heart



WB Suggested Anti-CGI-143 Antibody Titration: 0.2-1  
 $\mu\text{g/ml}$   
Positive Control: Human heart

Please note: All products are 'FOR RESEARCH USE ONLY. NOT FOR USE IN DIAGNOSTIC OR THERAPEUTIC PROCEDURES'.