

REXO4 antibody - C-terminal region

Rabbit Polyclonal Antibody

Catalog # AI10656

Product Information

Application	WB
Primary Accession	Q9GZR2
Other Accession	NM_020385 , NP_065118
Reactivity	Human, Mouse, Rat, Zebrafish, Pig, Dog, Horse, Bovine
Predicted	Human, Mouse, Rat, Dog, Horse, Bovine
Host	Rabbit
Clonality	Polyclonal
Calculated MW	46672

Additional Information

Gene ID	57109
Alias Symbol	REX4, XPMC2, XPMC2H
Other Names	RNA exonuclease 4, 3.1.-., Exonuclease XPMC2, Prevents mitotic catastrophe 2 protein homolog, hPMC2, REXO4, PMC2, XPMC2H
Format	Liquid. Purified antibody supplied in 1x PBS buffer with 0.09% (w/v) sodium azide and 2% sucrose.
Reconstitution & Storage	Add 50 ul of distilled water. Final anti-REXO4 antibody concentration is 1 mg/ml in PBS buffer with 2% sucrose. For longer periods of storage, store at 20°C. Avoid repeat freeze-thaw cycles.
Precautions	REXO4 antibody - C-terminal region is for research use only and not for use in diagnostic or therapeutic procedures.

Protein Information

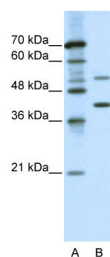
Name	REXO4
Synonyms	PMC2, XPMC2H
Cellular Location	Nucleus, nucleolus

References

Montano, M.M., et al., (2000) J. Biol. Chem. 275 (44), 34306-34313
Reconstitution and Storage: For short term use, store at 2-8°C up to 1 week. For long term storage, store at -20°C in small aliquots to prevent freeze-thaw

cycles.

Images



WB Suggested Anti-REXO4 Antibody Titration: 0.2-1 μ g/ml

ELISA Titer: 1:1562500

Positive Control: Jurkat cell lysate

Please note: All products are 'FOR RESEARCH USE ONLY. NOT FOR USE IN DIAGNOSTIC OR THERAPEUTIC PROCEDURES'.