

# RPS16 antibody - N-terminal region

Rabbit Polyclonal Antibody

Catalog # AI10663

## Product Information

---

<b>Application</b>	WB, IHC
<b>Primary Accession</b>	<a href="#">P17008</a>
<b>Other Accession</b>	<a href="#">NM_001020</a> , <a href="#">NP_001011</a>
<b>Reactivity</b>	Human, Mouse, Rat, Rabbit, Zebrafish, Pig, Dog, Horse, Bovine
<b>Predicted</b>	Mouse, Rat, Rabbit, Zebrafish, Chicken
<b>Host</b>	Rabbit
<b>Clonality</b>	Polyclonal
<b>Calculated MW</b>	16 kDa

## Additional Information

---

<b>Alias Symbol</b>	S16
<b>Format</b>	Liquid. Purified antibody supplied in 1x PBS buffer with 0.09% (w/v) sodium azide and 2% sucrose.
<b>Reconstitution &amp; Storage</b>	Add 100 ul of distilled water. Final anti-RPS16 antibody concentration is 1 mg/ml in PBS buffer with 2% sucrose. For longer periods of storage, store at 20°C. Avoid repeat freeze-thaw cycles.
<b>Precautions</b>	RPS16 antibody - N-terminal region is for research use only and not for use in diagnostic or therapeutic procedures.

## Protein Information

---

## References

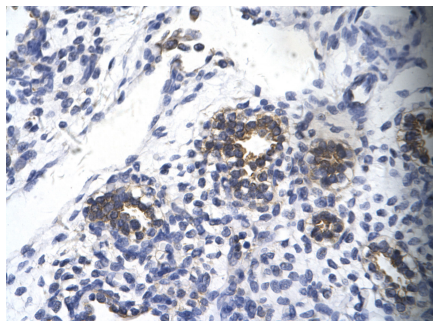
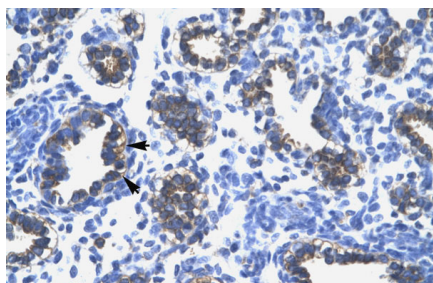
---

Yoshihama, M., et al., (2002) Genome Res. 12 (3), 379-390  
Reconstitution and Storage: For short term use, store at 2-8°C up to 1 week. For long term storage, store at -20°C in small aliquots to prevent freeze-thaw cycles.  
Publications: Okada, K. et al. Expression analysis of MIF4GD in the rat testis. J. Reprod. Dev. 57, 256-61 (2011). WB, Mouse, Rat, Pig, Human, Dog, H, Rabbit, Guinea pig, Zebrafish, Bovine  
21157122 Sugihara, Y. et al. Identification and expression of an autosomal paralogue of ribosomal protein S4, X-linked, in mice: potential involvement of testis-specific ribosomal proteins in translation and spermatogenesis. Gene 521, 91-9 (2013). WB, Mouse, Rat, Pig, Human, Dog, H, Rabbit, Guinea pig, Zebrafish, Bovine  
23500592

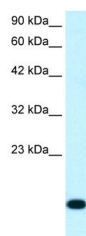
## Images

---

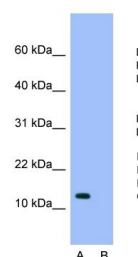
Human Lung



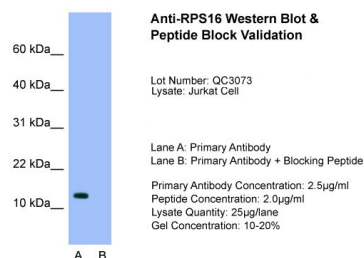
Rabbit Anti-RPS16 Antibody  
 Paraffin Embedded Tissue: Human alveolar cell  
 Cellular Data: Epithelial cells of renal tubule  
 Antibody Concentration: 4.0-8.0 µg/ml  
 Magnification: 400X



WB Suggested Anti-RPS16 Antibody Titration: 1.25µg/ml  
 Positive Control: Jurkat cell lysate



Host: Rabbit  
 Target Name: RPS16  
 Sample Tissue: Jurkat cell lysate  
 S  
 Lane A: Primary Antibody  
 Lane B: Primary Antibody + Blocking Peptide  
 Primary Antibody  
 Concentration: 2.5µg/ml  
 Peptide Concentration: 4.0µg/ml  
 Lysate Quantity: 25ug/lane Gel  
 Concentration: 12%



Host: Rabbit  
 Target Name: RPS16  
 Sample Tissue: Jurkat  
 Lane A: Primary Antibody  
 Lane B: Primary Antibody + Blocking Peptide  
 Primary Antibody  
 Concentration: 2.5µg/ml  
 Peptide Concentration: 2.0µg/ml  
 Lysate Quantity: 25ug/lane Gel  
 Concentration: 10-20%

Please note: All products are 'FOR RESEARCH USE ONLY. NOT FOR USE IN DIAGNOSTIC OR THERAPEUTIC PROCEDURES'.