

TBC1D10B antibody - C-terminal region

Rabbit Polyclonal Antibody

Catalog # AI10680

Product Information

Application	WB
Primary Accession	Q9H8Z2
Other Accession	NM_015527 , NP_056342
Reactivity	Human, Mouse, Rat, Rabbit, Zebrafish, Pig, Dog, Horse, Bovine, Yeast
Predicted	Horse, Bovine
Host	Rabbit
Clonality	Polyclonal
Calculated MW	61 KDa

Additional Information

Alias Symbol	EPI64B, FP2461
Format	Liquid. Purified antibody supplied in 1x PBS buffer with 0.09% (w/v) sodium azide and 2% sucrose.
Reconstitution & Storage	Add 100 ul of distilled water. Final anti-TBC1D10B antibody concentration is 1 mg/ml in PBS buffer with 2% sucrose. For longer periods of storage, store at 20°C. Avoid repeat freeze-thaw cycles.
Precautions	TBC1D10B antibody - C-terminal region is for research use only and not for use in diagnostic or therapeutic procedures.

Protein Information

References

Ota,T., et al., (2004) Nat. Genet. 36 (1), 40-45
Reconstitution and Storage:For short term use, store at 2-8C up to 1 week. For long term storage, store at -20C in small aliquots to prevent freeze-thaw cycles.

Images

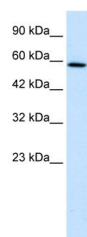
WB Suggested Anti-TBC1D10B Antibody Titration:

1.25µg/ml

ELISA Titer: 1:12500

Positive Control: HepG2 cell lysate

TBC1D10B is supported by BioGPS gene expression data to be expressed in HepG2



Please note: All products are 'FOR RESEARCH USE ONLY. NOT FOR USE IN DIAGNOSTIC OR THERAPEUTIC PROCEDURES'.