

TFB1M antibody - N-terminal region

Rabbit Polyclonal Antibody
Catalog # AI10684

Product Information

Application	WB
Primary Accession	Q8WVM0
Other Accession	NM_016020 , NP_057104
Reactivity	Human, Rat, Rabbit, Zebrafish, Dog, Horse, Bovine
Predicted	Pig, Chicken, Horse, Bovine
Host	Rabbit
Clonality	Polyclonal
Calculated MW	39 KDa

Additional Information

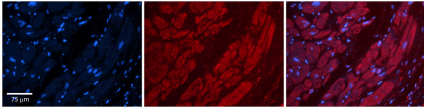
Alias Symbol	CGI-75, CGI75, mtTFB, mtTFB1
Other Names	Dimethyladenosine transferase 1, mitochondrial, 2.1.1.-, Mitochondrial 12S rRNA dimethylase 1, Mitochondrial transcription factor B1, h-mtTFB, h-mtTFB1, hTFB1M, mtTFB1, S-adenosylmethionine-6-N', N'-adenosyl(rRNA) dimethyltransferase 1, TFB1M
Format	Liquid. Purified antibody supplied in 1x PBS buffer with 0.09% (w/v) sodium azide and 2% sucrose.
Reconstitution & Storage	Add 50 ul of distilled water. Final anti-TFB1M antibody concentration is 1 mg/ml in PBS buffer with 2% sucrose. For longer periods of storage, store at 20°C. Avoid repeat freeze-thaw cycles.
Precautions	TFB1M antibody - N-terminal region is for research use only and not for use in diagnostic or therapeutic procedures.

Protein Information

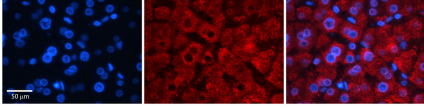
References

Cotney,J., (2007) Nucleic Acids Res. 35 (12), 4042-4054 Reconstitution and Storage:For short term use, store at 2-8C up to 1 week. For long term storage, store at -20C in small aliquots to prevent freeze-thaw cycles.

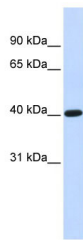
Images



Formalin Fixed Paraffin Embedded Tissue: Human Adult heart Observed Staining: Cytoplasmic
Primary Antibody
Concentration: 1:600
Secondary Antibody: Donkey anti-Rabbit-Cy2/3
Secondary Antibody
Concentration: 1:200
Magnification: 20X
Exposure Time: 0.5 µs 2.0 sec
Protocol located in Reviews and Data.



Rabbit Anti-TFB1M Antibody
Catalog Number: AI10684
Formalin Fixed Paraffin Embedded Tissue: Human Adult liver Observed Staining: Cytoplasmic
Primary Antibody
Concentration: 1:100
Secondary Antibody: Donkey anti-Rabbit-Cy2/3
Secondary Antibody
Concentration: 1:200
Magnification: 20X
Exposure Time: 0.5 µs 2.0 sec
Protocol located in Reviews and Data.



WB Suggested Anti-TFB1M Antibody Titration: 0.2-1 µg/ml
ELISA Titer: 1:312500
Positive Control: Human Liver

Please note: All products are 'FOR RESEARCH USE ONLY. NOT FOR USE IN DIAGNOSTIC OR THERAPEUTIC PROCEDURES'.