

Klhl26 Antibody - N-terminal region

Rabbit Polyclonal Antibody

Catalog # AI10692

Product Information

Application	WB
Primary Accession	Q8BGY4
Other Accession	NM_178771 , NP_848886
Reactivity	Human, Mouse, Rat, Rabbit, Dog, Horse, Bovine
Predicted	Mouse, Rat, Rabbit, Pig, Horse, Bovine
Host	Rabbit
Clonality	Polyclonal
Calculated MW	67031

Additional Information

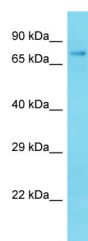
Gene ID	234378
Alias Symbol	C630013N10Rik, Klhl26
Other Names	Kelch-like protein 26, Klhl26
Format	Liquid. Purified antibody supplied in 1x PBS buffer with 0.09% (w/v) sodium azide and 2% sucrose.
Reconstitution & Storage	Add 50 ul of distilled water. Final anti-Klhl26 antibody concentration is 1 mg/ml in PBS buffer with 2% sucrose. For longer periods of storage, store at 20°C. Avoid repeat freeze-thaw cycles.
Precautions	Klhl26 Antibody - N-terminal region is for research use only and not for use in diagnostic or therapeutic procedures.

Protein Information

Name	Klhl26
Function	May play a role in endo(sarco)plasmic reticulum (ER/SR) mitochondrial signaling (By similarity). May be part of the ubiquitin- proteasome system (UPS) and affect ubiquitination and degradation of target substrates in cardiomyocytes (By similarity).

Images

Host: Rabbit



Target Name: Klhl26
Sample Tissue: Mouse Liver lysates
Antibody Dilution: 1.0µg/ml

Please note: All products are 'FOR RESEARCH USE ONLY. NOT FOR USE IN DIAGNOSTIC OR THERAPEUTIC PROCEDURES'.