

PRDM11 antibody - middle region

Rabbit Polyclonal Antibody

Catalog # AI10696

Product Information

Application	WB
Primary Accession	Q9NQV5
Other Accession	NM_020229 , NP_064614
Reactivity	Human, Mouse, Rat, Rabbit, Pig, Dog, Horse, Bovine
Predicted	Mouse, Rabbit, Pig, Dog
Host	Rabbit
Clonality	Polyclonal
Calculated MW	57863

Additional Information

Gene ID	56981
Alias Symbol	PFM8
Other Names	PR domain-containing protein 11, 2.1.1.-, PRDM11, PFM8
Format	Liquid. Purified antibody supplied in 1x PBS buffer with 0.09% (w/v) sodium azide and 2% sucrose.
Reconstitution & Storage	Add 50 ul of distilled water. Final anti-PRDM11 antibody concentration is 1 mg/ml in PBS buffer with 2% sucrose. For longer periods of storage, store at 20°C. Avoid repeat freeze-thaw cycles.
Precautions	PRDM11 antibody - middle region is for research use only and not for use in diagnostic or therapeutic procedures.

Protein Information

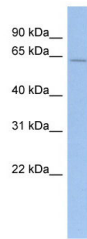
Name	PRDM11
Synonyms	PFM8
Function	May be involved in transcription regulation.
Cellular Location	Nucleus. Cytoplasm
Tissue Location	Highly expressed in lung, including bronchial epithelial cells and airway smooth muscle cells, as well as in peripheral blood mononuclear cells. In tonsils, expressed in B-cell types, including naive B-cells, centroblasts, centrocytes and memory B- cells (at protein level). In benign hyperplastic lymph nodes, expressed in germinal center cells in both the dark and light

zones, as well as in scattered cells in the mantle zone and the interfollicular area (at protein level).

References

Xiao,B., (2003) Curr. Opin. Struct. Biol. 13 (6), 699-705 Reconstitution and Storage:For short term use, store at 2-8C up to 1 week. For long term storage, store at -20C in small aliquots to prevent freeze-thaw cycles.

Images



WB Suggested Anti-PRDM11 Antibody Titration: 0.2-1
µg/ml
ELISA Titer: 1:1562500
Positive Control: Human Spleen

Please note: All products are 'FOR RESEARCH USE ONLY. NOT FOR USE IN DIAGNOSTIC OR THERAPEUTIC PROCEDURES'.