

C16orf44 antibody - middle region

Rabbit Polyclonal Antibody

Catalog # AI10697

Product Information

Application	WB
Primary Accession	Q8N4N3
Other Accession	NM_024731 , NP_079007
Reactivity	Human, Mouse, Rat, Rabbit, Dog, Horse, Bovine
Predicted	Human, Mouse, Rat, Bovine
Host	Rabbit
Clonality	Polyclonal
Calculated MW	69896

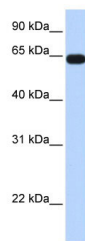
Additional Information

Gene ID	79786
Alias Symbol	FLJ12543, C16orf44
Other Names	Kelch-like protein 36, KLHL36, C16orf44
Format	Liquid. Purified antibody supplied in 1x PBS buffer with 0.09% (w/v) sodium azide and 2% sucrose.
Reconstitution & Storage	Add 50 ul of distilled water. Final anti-C16orf44 antibody concentration is 1 mg/ml in PBS buffer with 2% sucrose. For longer periods of storage, store at 20°C. Avoid repeat freeze-thaw cycles.
Precautions	C16orf44 antibody - middle region is for research use only and not for use in diagnostic or therapeutic procedures.

Protein Information

Name	KLHL36
Synonyms	C16orf44
Function	Probable substrate-specific adapter of an E3 ubiquitin- protein ligase complex which mediates the ubiquitination and subsequent proteasomal degradation of target proteins.

Images



WB Suggested Anti-C16orf44 Antibody Titration: 0.2-1
µg/ml
ELISA Titer: 1:62500
Positive Control: Human heart

Please note: All products are 'FOR RESEARCH USE ONLY. NOT FOR USE IN DIAGNOSTIC OR THERAPEUTIC PROCEDURES'.