

PSIP1 antibody - middle region

Rabbit Polyclonal Antibody

Catalog # AI10702

Product Information

Application	WB, IHC
Primary Accession	O75475
Other Accession	NM_033222 , NP_150091
Reactivity	Human, Mouse, Rat, Rabbit, Dog, Horse, Bovine, Sheep
Predicted	Human, Mouse, Rat, Rabbit, Pig, Chicken, Dog, Horse, Bovine, Sheep
Host	Rabbit
Clonality	Polyclonal
Calculated MW	60103

Additional Information

Gene ID	11168
Alias Symbol	p52, p75, PAIP, DFS70, LEDGF, PSIP2
Other Names	PC4 and SFRS1-interacting protein, CLL-associated antigen KW-7, Dense fine speckles 70 kDa protein, DFS 70, Lens epithelium-derived growth factor, Transcriptional coactivator p75/p52, PSIP1, DFS70, LEDGF, PSIP2
Format	Liquid. Purified antibody supplied in 1x PBS buffer with 0.09% (w/v) sodium azide and 2% sucrose.
Reconstitution & Storage	Add 100 ul of distilled water. Final anti-PSIP1 antibody concentration is 1 mg/ml in PBS buffer with 2% sucrose. For longer periods of storage, store at 20°C. Avoid repeat freeze-thaw cycles.
Precautions	PSIP1 antibody - middle region is for research use only and not for use in diagnostic or therapeutic procedures.

Protein Information

Name	PSIP1
Synonyms	DFS70, LEDGF, PSIP2
Function	Transcriptional coactivator involved in neuroepithelial stem cell differentiation and neurogenesis. Involved in particular in lens epithelial cell gene regulation and stress responses. May play an important role in lens epithelial to fiber cell terminal differentiation. May play a protective role during stress-induced apoptosis. Isoform 2 is a more general and stronger transcriptional coactivator. Isoform 2 may also act as an adapter to coordinate pre- mRNA splicing. Cellular cofactor for lentiviral integration.

Cellular Location

Nucleus. Note=Remains chromatin-associated throughout the cell cycle

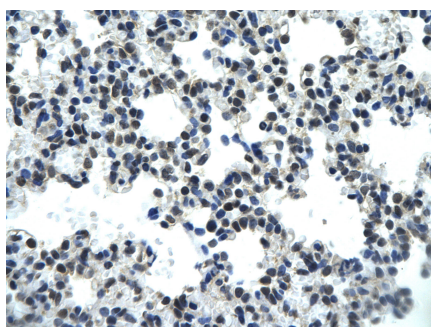
Tissue Location

Widely expressed. Expressed at high level in the thymus. Expressed in fetal and adult brain. Expressed in neurons, but not astrocytes. Markedly elevated in fetal as compared to adult brain In the adult brain, expressed in the subventricular zone (SVZ), in hippocampus, and undetectable elsewhere. In the fetal brain, expressed in the germinal neuroepithelium and cortical plate regions

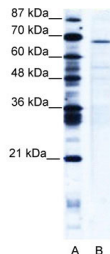
References

Vandegraaff,N., et al., (2006) Virology 346 (2), 415-426
Reconstitution and Storage:For short term use, store at 2-8C up to 1 week. For long term storage, store at -20C in small aliquots to prevent freeze-thaw cycles.

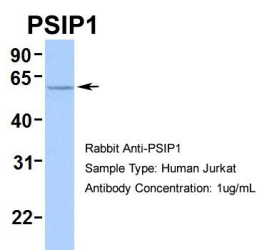
Images



Rabbit Anti-PSIP1 antibody
Catalog Number: AI10702
Paraffin Embedded Tissue: Human Lung cell
Cellular Data: Epithelial cells of renal tubule
Antibody Concentration: 4.0-8.0 µg/ml
Magnification: 400X



WB Suggested Anti-PSIP1 Antibody Titration: 5 µg/ml
Positive Control: Jurkat Whole Cell
PSIP1 is strongly supported by BioGPS gene expression data to be expressed in Human Jurkat cells



Human Jurkat

Please note: All products are 'FOR RESEARCH USE ONLY. NOT FOR USE IN DIAGNOSTIC OR THERAPEUTIC PROCEDURES'.