

Hpcal1 Antibody - C-terminal region

Rabbit Polyclonal Antibody

Catalog # AI10706

Product Information

Application	WB
Primary Accession	P62748
Other Accession	NM_016677 , NP_057886
Reactivity	Human, Mouse, Rat, Rabbit, Zebrafish, Pig, Dog, Horse, Bovine, Sheep
Predicted	Human, Mouse, Rat, Zebrafish, Pig, Dog, Horse, Bovine
Host	Rabbit
Clonality	Polyclonal
Calculated MW	22338

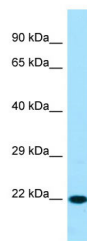
Additional Information

Gene ID	53602
Alias Symbol	NVP-3, Nvp3, VILIP3, Vns13, Vsn13
Other Names	Hippocalcin-like protein 1, Neural visinin-like protein 3, NVL-3, NVP-3, Visinin-like protein 3, VILIP-3, Hpcal1
Format	Liquid. Purified antibody supplied in 1x PBS buffer with 0.09% (w/v) sodium azide and 2% sucrose.
Reconstitution & Storage	Add 50 ul of distilled water. Final anti-Hpcal1 antibody concentration is 1 mg/ml in PBS buffer with 2% sucrose. For longer periods of storage, store at 20°C. Avoid repeat freeze-thaw cycles.
Precautions	Hpcal1 Antibody - C-terminal region is for research use only and not for use in diagnostic or therapeutic procedures.

Protein Information

Name	Hpcal1
Function	May be involved in the calcium-dependent regulation of rhodopsin phosphorylation.
Cellular Location	Membrane {ECO:0000250 UniProtKB:P37235}; Lipid- anchor {ECO:0000250 UniProtKB:P37235}

Images



WB Suggested Anti-Hpca1 Antibody Titration: 1.0 µg/ml
Positive Control: Mouse Stomach

Please note: All products are 'FOR RESEARCH USE ONLY. NOT FOR USE IN DIAGNOSTIC OR THERAPEUTIC PROCEDURES'.