

# TAF6 antibody - N-terminal region

Rabbit Polyclonal Antibody

Catalog # AI10708

## Product Information

---

<b>Application</b>	WB, IHC
<b>Primary Accession</b>	<a href="#">A4D2B3</a>
<b>Other Accession</b>	<a href="#">NM_139122</a> , <a href="#">NP_620834</a>
<b>Reactivity</b>	Human, Mouse, Rat, Zebrafish, Dog, Horse, Bovine, Yeast
<b>Predicted</b>	Human, Mouse, Bovine
<b>Host</b>	Rabbit
<b>Clonality</b>	Polyclonal
<b>Calculated MW</b>	71 KDa

## Additional Information

---

<b>Alias Symbol</b>	DKFZp781E21155, MGC:8964, TAF2E, TAFII70, TAFII80, TAFII85, TAFII-70, TAFII-80, TAF(II)70, TAF(II)80
<b>Format</b>	Liquid. Purified antibody supplied in 1x PBS buffer with 0.09% (w/v) sodium azide and 2% sucrose.
<b>Reconstitution &amp; Storage</b>	Add 100 ul of distilled water. Final anti-TAF6 antibody concentration is 1 mg/ml in PBS buffer with 2% sucrose. For longer periods of storage, store at 20°C. Avoid repeat freeze-thaw cycles.
<b>Precautions</b>	TAF6 antibody - N-terminal region is for research use only and not for use in diagnostic or therapeutic procedures.

## Protein Information

---

## References

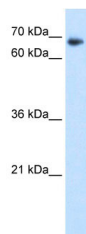
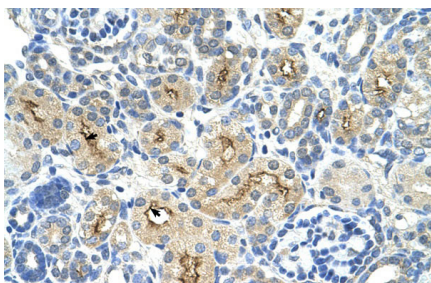
---

Kimura,K., (2006) Genome Res. 16 (1), 55-65  
Reconstitution and Storage:For short term use, store at 2-8C up to 1 week. For long term storage, store at -20C in small aliquots to prevent freeze-thaw cycles.

## Images

---

Human kidney



WB Suggested Anti-TAF6 Antibody Titration: 1.25µg/ml  
Positive Control: Transfected 293T

Please note: All products are 'FOR RESEARCH USE ONLY. NOT FOR USE IN DIAGNOSTIC OR THERAPEUTIC PROCEDURES'.