

Mid2 antibody - N-terminal region

Rabbit Polyclonal Antibody

Catalog # AI10714

Product Information

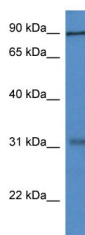
Application	WB
Primary Accession	B1AVF4
Other Accession	NM_011845 , NP_035975
Reactivity	Human, Mouse, Rat, Rabbit, Pig, Dog, Horse, Bovine
Predicted	Human, Mouse, Rat, Rabbit, Pig, Chicken
Host	Rabbit
Clonality	Polyclonal
Calculated MW	78 kDa

Additional Information

Alias Symbol	FXY2, Trim1
Format	Liquid. Purified antibody supplied in 1x PBS buffer with 0.09% (w/v) sodium azide and 2% sucrose.
Reconstitution & Storage	Add 50 ul of distilled water. Final anti-Mid2 antibody concentration is 1 mg/ml in PBS buffer with 2% sucrose. For longer periods of storage, store at 20°C. Avoid repeat freeze-thaw cycles.
Precautions	Mid2 antibody - N-terminal region is for research use only and not for use in diagnostic or therapeutic procedures.

Protein Information

Images



WB Suggested Anti-Mid2 Antibody Titration: 1.0 µg/ml
Positive Control: Mouse Small Intestine