

# BTBD3 antibody - middle region

Rabbit Polyclonal Antibody

Catalog # AI10721

## Product Information

---

<b>Application</b>	WB
<b>Primary Accession</b>	<a href="#">Q9Y2F9</a>
<b>Other Accession</b>	<a href="#">NM_014962</a> , <a href="#">NP_055777</a>
<b>Reactivity</b>	Human, Mouse, Rat, Rabbit, Zebrafish, Pig, Dog, Horse, Bovine
<b>Predicted</b>	Human, Mouse, Rat, Rabbit, Pig, Bovine
<b>Host</b>	Rabbit
<b>Clonality</b>	Polyclonal
<b>Calculated MW</b>	58420

## Additional Information

---

<b>Gene ID</b>	22903
<b>Alias Symbol</b>	dj742j24.1
<b>Other Names</b>	BTB/POZ domain-containing protein 3, BTBD3, KIAA0952
<b>Format</b>	Liquid. Purified antibody supplied in 1x PBS buffer with 0.09% (w/v) sodium azide and 2% sucrose.
<b>Reconstitution &amp; Storage</b>	Add 100 ul of distilled water. Final anti-BTBD3 antibody concentration is 1 mg/ml in PBS buffer with 2% sucrose. For longer periods of storage, store at 20°C. Avoid repeat freeze-thaw cycles.
<b>Precautions</b>	BTBD3 antibody - middle region is for research use only and not for use in diagnostic or therapeutic procedures.

## Protein Information

---

<b>Name</b>	BTBD3
<b>Synonyms</b>	KIAA0952
<b>Function</b>	Acts as a key regulator of dendritic field orientation during development of sensory cortex. Also directs dendrites toward active axon terminals when ectopically expressed (By similarity).
<b>Cellular Location</b>	Cytoplasm, cytosol. Nucleus. Note=Translocates from the cytosol to the nucleus in response to neuronal activity.

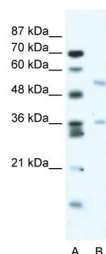
## References

---

Ota,T., et al., (2004) Nat. Genet. 36 (1), 40-45  
Reconstitution and Storage: For short term use, store at 2-8C up to 1 week. For long term storage, store at -20C in small aliquots to prevent freeze-thaw cycles.

## Images

---



WB Suggested Anti-BTBD3 Antibody Titration: 2.5µg/ml  
ELISA Titer: 1:62500  
Positive Control: Jurkat cell lysate

Please note: All products are 'FOR RESEARCH USE ONLY. NOT FOR USE IN DIAGNOSTIC OR THERAPEUTIC PROCEDURES'.