

HS747E2A antibody - middle region

Rabbit Polyclonal Antibody

Catalog # AI10735

Product Information

Application	WB
Primary Accession	O95567
Other Accession	NM_015370 , NP_056185
Reactivity	Human, Pig, Dog, Horse, Bovine
Predicted	Human
Host	Rabbit
Clonality	Polyclonal
Calculated MW	32655

Additional Information

Gene ID	25770
Alias Symbol	HS747E2A, bK747E2.1
Other Names	Uncharacterized protein C22orf31, C22orf31
Format	Liquid. Purified antibody supplied in 1x PBS buffer with 0.09% (w/v) sodium azide and 2% sucrose.
Reconstitution & Storage	Add 100 ul of distilled water. Final anti-HS747E2A antibody concentration is 1 mg/ml in PBS buffer with 2% sucrose. For longer periods of storage, store at 20°C. Avoid repeat freeze-thaw cycles.
Precautions	HS747E2A antibody - middle region is for research use only and not for use in diagnostic or therapeutic procedures.

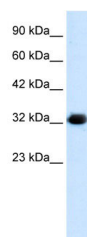
Protein Information

Name	C22orf31
-------------	----------

References

Collins, J.E., et al., (2004) Genome Biol. 5(10), R84
Reconstitution and Storage: For short term use, store at 2-8°C up to 1 week. For long term storage, store at -20°C in small aliquots to prevent freeze-thaw cycles.

Images



WB Suggested Anti-HS747E2A Antibody Titration:
1.25µg/ml
ELISA Titer: 1:500
Positive Control: HepG2 cell lysate

Please note: All products are 'FOR RESEARCH USE ONLY. NOT FOR USE IN DIAGNOSTIC OR THERAPEUTIC PROCEDURES'.