

TRI40 Antibody - C-terminal region

Rabbit Polyclonal Antibody

Catalog # AI10745

Product Information

Application	WB
Primary Accession	Q6P9F5
Reactivity	Human
Predicted	Human, Rat, Rabbit, Horse
Host	Rabbit
Clonality	Polyclonal
Calculated MW	29336

Additional Information

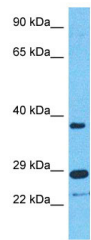
Gene ID	135644
Alias Symbol Other Names	TRIM40, RNF35, Tripartite motif-containing protein 40, Probable E3 NEDD8-protein ligase, RING finger protein 35, TRIM40, RNF35
Format	Liquid. Purified antibody supplied in 1x PBS buffer with 0.09% (w/v) sodium azide and 2% sucrose.
Reconstitution & Storage	Add 50 µl of distilled water. Final Anti-TRI40 antibody concentration is 1 mg/ml in PBS buffer with 2% sucrose. For longer periods of storage, store at -20°C. Avoid repeat freeze-thaw cycles.
Precautions	TRI40 Antibody - C-terminal region is for research use only and not for use in diagnostic or therapeutic procedures.

Protein Information

Name	TRIM40
Synonyms	RNF35
Function	E3 ubiquitin-protein ligase that plays a role in the limitation of the innate immune response (PubMed: 21474709 , PubMed: 29117565). Mediates inhibition of the RLR signaling pathway by ubiquitinating RIGI and IFIH1 receptors, leading to their proteasomal degradation (PubMed: 21474709). Also promotes the neddylation of IKBKG/NEMO, stabilizing NFKBIA, and thereby inhibiting of NF-kappa-B nuclear translocation and activation (PubMed: 21474709).
Tissue Location	Highly expressed in normal gastrointestinal epithelia but that is

down-regulated in gastrointestinal carcinomas and chronic inflammatory lesions of the gastrointestinal tract

Images



Host: Rabbit
Target Name: TRI40
Sample Tissue: Jurkat Cell Lysate
Antibody Dilution: 1.0µg/ml

Host: Rabbit
Target Name: TRI40
Sample Tissue: Jurkat Whole Cell lysates
Antibody Dilution: 1µg/ml

Please note: All products are 'FOR RESEARCH USE ONLY. NOT FOR USE IN DIAGNOSTIC OR THERAPEUTIC PROCEDURES'.