

# Clcn5 antibody - middle region

Rabbit Polyclonal Antibody

Catalog # AI10759

## Product Information

---

<b>Application</b>	WB
<b>Primary Accession</b>	<a href="#">Q9WVD4</a>
<b>Other Accession</b>	<a href="#">NM_016691</a> , <a href="#">NP_057900</a>
<b>Reactivity</b>	Human, Mouse, Rat, Rabbit, Zebrafish, Dog, Horse, Bovine, Sheep
<b>Predicted</b>	Human, Mouse, Rat, Rabbit, Pig, Chicken
<b>Host</b>	Rabbit
<b>Clonality</b>	Polyclonal
<b>Calculated MW</b>	90706

## Additional Information

---

<b>Gene ID</b>	12728
<b>Alias Symbol</b> <b>Other Names</b>	5430408K11Rik, CLC-5, Clc5, D930009B12Rik, DXImx42e, Sfc13, T25545 H(+)/Cl(-) exchange transporter 5, Chloride channel protein 5, CLC-5, Chloride transporter CLC-5, Clcn5, Clc5
<b>Format</b>	Liquid. Purified antibody supplied in 1x PBS buffer with 0.09% (w/v) sodium azide and 2% sucrose.
<b>Reconstitution &amp; Storage</b>	Add 50 ul of distilled water. Final anti-Clcn5 antibody concentration is 1 mg/ml in PBS buffer with 2% sucrose. For longer periods of storage, store at 20°C. Avoid repeat freeze-thaw cycles.
<b>Precautions</b>	Clcn5 antibody - middle region is for research use only and not for use in diagnostic or therapeutic procedures.

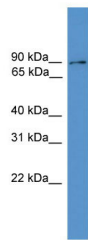
## Protein Information

---

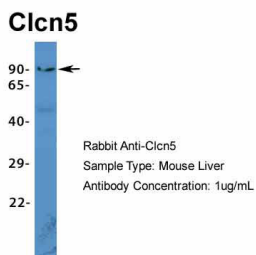
<b>Name</b>	Clcn5
<b>Synonyms</b>	Clc5
<b>Function</b>	Proton-coupled chloride transporter. Functions as antiport system and exchanges chloride ions against protons. Important for normal acidification of the endosome lumen. May play an important role in renal tubular function (By similarity). The CLC channel family contains both chloride channels and proton-coupled anion transporters that exchange chloride or another anion for protons. The absence of conserved gating glutamate residues is typical for family members that function as channels (Probable).

Cellular Location	Golgi apparatus membrane {ECO:0000250 UniProtKB:P51795}; Multi-pass membrane protein {ECO:0000250 UniProtKB:P51795}. Endosome membrane {ECO:0000250 UniProtKB:P51795}; Multi-pass membrane protein {ECO:0000250 UniProtKB:P51795}. Cell membrane {ECO:0000250 UniProtKB:P51795}; Multi-pass membrane protein {ECO:0000250 UniProtKB:P51795}
Tissue Location	Kidney specific.

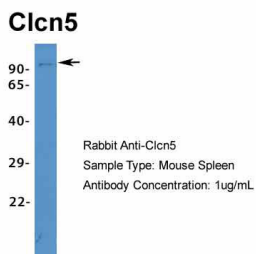
Images



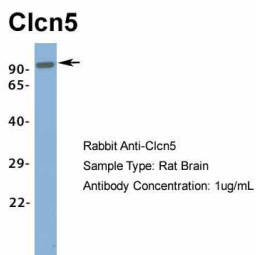
WB Suggested Anti-Clcn5 Antibody Titration: 0.2-1 µg/ml  
ELISA Titer: 1:62500  
Positive Control: Mouse Brain



Host: Rabbit  
Target Name: Clcn5  
Sample Tissue: Mouse Liver  
Antibody Dilution: 1.0µg/ml



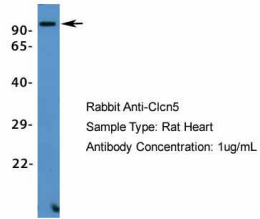
Host: Rabbit  
Target Name: Clcn5  
Sample Tissue: Mouse Spleen  
Antibody Dilution: 1.0µg/ml



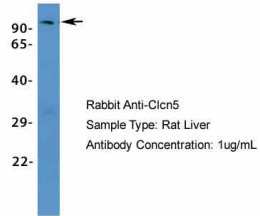
Host: Rabbit  
Target Name: Clcn5  
Sample Tissue: Rat Brain  
Antibody Dilution: 1.0µg/ml

Host: Rabbit  
Target Name: Clcn5  
Sample Tissue: Mouse Heart  
Antibody Dilution: 1.0µg/ml

### Clcn5

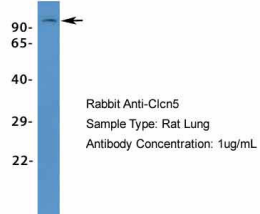


### Clcn5



Host: Rabbit  
Target Name: Clcn5  
Sample Tissue: Rat Liver  
Antibody Dilution: 1.0 µg/ml

### Clcn5



Host: Rabbit  
Target Name: Clcn5  
Sample Tissue: Rat Lung  
Antibody Dilution: 1.0 µg/ml

Please note: All products are 'FOR RESEARCH USE ONLY. NOT FOR USE IN DIAGNOSTIC OR THERAPEUTIC PROCEDURES'.