

CACNB1 antibody - N-terminal region

Rabbit Polyclonal Antibody

Catalog # AI10763

Product Information

Application	WB
Primary Accession	Q02641
Other Accession	NM_000723 , NP_000714
Reactivity	Human, Mouse, Rat, Rabbit, Zebrafish, Pig, Dog, Horse, Bovine
Predicted	Human, Mouse, Rat, Zebrafish, Pig, Bovine
Host	Rabbit
Clonality	Polyclonal
Calculated MW	65714

Additional Information

Gene ID	782
Alias Symbol	CAB1, CACNLB1, CCHLB1, MGC41896
Other Names	Voltage-dependent L-type calcium channel subunit beta-1, CAB1, Calcium channel voltage-dependent subunit beta 1, CACNB1, CACNLB1
Format	Liquid. Purified antibody supplied in 1x PBS buffer with 0.09% (w/v) sodium azide and 2% sucrose.
Reconstitution & Storage	Add 50 ul of distilled water. Final anti-CACNB1 antibody concentration is 1 mg/ml in PBS buffer with 2% sucrose. For longer periods of storage, store at 20°C. Avoid repeat freeze-thaw cycles.
Precautions	CACNB1 antibody - N-terminal region is for research use only and not for use in diagnostic or therapeutic procedures.

Protein Information

Name	CACNB1
Synonyms	CACNLB1
Function	Regulatory subunit of L-type calcium channels (PubMed: 1309651 , PubMed: 15615847 , PubMed: 8107964). Regulates the activity of L-type calcium channels that contain CACNA1A as pore-forming subunit (By similarity). Regulates the activity of L-type calcium channels that contain CACNA1C as pore-forming subunit and increases the presence of the channel complex at the cell membrane (PubMed: 15615847). Required for functional expression L-type calcium channels that contain CACNA1D as pore-forming subunit (PubMed: 1309651). Regulates the activity of L-type calcium channels that

contain CACNA1B as pore-forming subunit (PubMed:[8107964](#)).

Cellular Location

Cell membrane, sarcolemma; Peripheral membrane protein {ECO:0000250|UniProtKB:P19517}; Cytoplasmic side {ECO:0000250|UniProtKB:P19517}. Cell membrane; Peripheral membrane protein

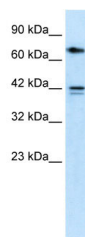
Tissue Location

Detected in heart ventricle (at protein level) (PubMed:15615847). Isoform 1 and isoform 3 are expressed in brain, heart, spleen, central nervous system and neuroblastoma cells. Isoform 2 is expressed in skeletal muscle.

References

Hogan,K., et al., (1999) Neurosci. Lett. 277 (2), 111-114
Reconstitution and Storage:For short term use, store at 2-8C up to 1 week. For long term storage, store at -20C in small aliquots to prevent freeze-thaw cycles.

Images



WB Suggested Anti-CACNB1 Antibody Titration: 0.2-1 µg/ml
ELISA Titer: 1:62500
Positive Control: HepG2 cell lysate

Please note: All products are 'FOR RESEARCH USE ONLY. NOT FOR USE IN DIAGNOSTIC OR THERAPEUTIC PROCEDURES'.