

CLIC1 antibody - N-terminal region

Rabbit Polyclonal Antibody

Catalog # AI10778

Product Information

Application	WB, IHC
Primary Accession	Q502X1
Other Accession	NM_001288 , NP_001279
Reactivity	Human, Mouse, Rat, Rabbit, Zebrafish, Goat, Dog, Horse, Bovine
Predicted	Human, Mouse, Rat, Rabbit, Zebrafish, Pig, Goat, Bovine
Host	Rabbit
Clonality	Polyclonal
Calculated MW	27 KDa

Additional Information

Alias Symbol	G6, NCC27
Format	Liquid. Purified antibody supplied in 1x PBS buffer with 0.09% (w/v) sodium azide and 2% sucrose.
Reconstitution & Storage	Add 100 ul of distilled water. Final anti-CLIC1 antibody concentration is 1 mg/ml in PBS buffer with 2% sucrose. For longer periods of storage, store at 20°C. Avoid repeat freeze-thaw cycles.
Precautions	CLIC1 antibody - N-terminal region is for research use only and not for use in diagnostic or therapeutic procedures.

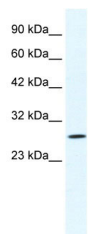
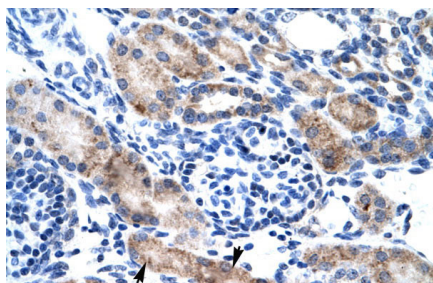
Protein Information

References

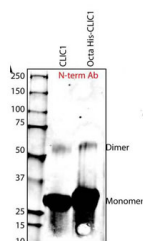
Novarino, G., et al., (2004) J. Neurosci. 24 (23), 5322-5330
Reconstitution and Storage: For short term use, store at 2-8°C up to 1 week. For long term storage, store at -20°C in small aliquots to prevent freeze-thaw cycles.
Publications: Yang, J.-Y. et al. Chloride intracellular channel 1 regulates osteoblast differentiation. Bone 45, 1175-85 (2009). WB, Rat, Dog, H, Goat, Rabbit, Guinea pig, Human, Mouse, Bovine, Zebrafish 19703605

Images

Human kidney

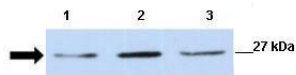


WB Suggested Anti-CLIC1 Antibody Titration: 1.25µg/ml
ELISA Titer: 1:312500
Positive Control: Jurkat cell lysate



Sample Type: Purified Recombinant CLIC-1 Protein
Primary Dilution: 1:1000
Submitted by: Harpreet Singh, University of California Los Angeles

CLIC1



Lanes: Lane 1: 30ug mouse renal epithelial lysate Lane 2: 30ug mouse renal epithelial lysate Lane 3: 30ug mouse renal epithelial lysate
Primary Antibody Dilution: 1:500
Secondary Antibody: Anti-rabbit-HRP
Secondary Antibody Dilution: 1:2500
Gene Name: CLIC1
Submitted by: Dr. JUNMING FAN, ECU

See Immunoblot 3 Data and Customer Feedback for more information.

Please note: All products are 'FOR RESEARCH USE ONLY. NOT FOR USE IN DIAGNOSTIC OR THERAPEUTIC PROCEDURES'.