

# CLIC2 antibody - C-terminal region

Rabbit Polyclonal Antibody

Catalog # AI10779

## Product Information

---

<b>Application</b>	WB
<b>Primary Accession</b>	<a href="#">O15247</a>
<b>Other Accession</b>	<a href="#">NM_001289</a> , <a href="#">NP_001280</a>
<b>Reactivity</b>	Human, Mouse, Rat, Rabbit, Pig, Dog, Horse, Bovine
<b>Predicted</b>	Human, Rat, Rabbit, Pig, Chicken, Dog, Bovine
<b>Host</b>	Rabbit
<b>Clonality</b>	Polyclonal
<b>Calculated MW</b>	28356

## Additional Information

---

<b>Gene ID</b>	1193
<b>Alias Symbol</b>	CLIC2b, XAP121
<b>Other Names</b>	Chloride intracellular channel protein 2, XAP121, CLIC2
<b>Format</b>	Liquid. Purified antibody supplied in 1x PBS buffer with 0.09% (w/v) sodium azide and 2% sucrose.
<b>Reconstitution &amp; Storage</b>	Add 100 ul of distilled water. Final anti-CLIC2 antibody concentration is 1 mg/ml in PBS buffer with 2% sucrose. For longer periods of storage, store at 20°C. Avoid repeat freeze-thaw cycles.
<b>Precautions</b>	CLIC2 antibody - C-terminal region is for research use only and not for use in diagnostic or therapeutic procedures.

## Protein Information

---

<b>Name</b>	CLIC2 {ECO:0000303 PubMed:9339381, ECO:0000312 HGNC:HGNC:2063}
<b>Function</b>	In the soluble state, catalyzes glutaredoxin-like thiol disulfide exchange reactions with reduced glutathione as electron donor. Displays weak glutathione peroxidase activity (Probable) (PubMed: <a href="#">25581026</a> ). Can insert into membranes and form chloride ion channels. Membrane insertion seems to be redox-regulated and may occur only under oxidizing conditions. Modulates the activity of RYR2 and inhibits calcium influx.
<b>Cellular Location</b>	Cytoplasm. Membrane; Single-pass membrane protein. Note=Exists both as soluble cytoplasmic protein and as membrane protein with probably a single transmembrane domain

## Tissue Location

Expressed in adult and fetal brain, heart, skeletal muscle, liver, lung, and spleen. Detected in adult stomach and testis Expressed in fetal thymus and kidney.

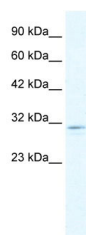
## References

---

Fan,L., et al., (2003) FEBS Lett. 540 (1-3), 77-80  
Reconstitution and Storage:For short term use, store at 2-8C up to 1 week. For long term storage, store at -20C in small aliquots to prevent freeze-thaw cycles.

## Images

---



WB Suggested Anti-CLIC2 Antibody Titration: 1.25µg/ml  
ELISA Titer: 1:312500  
Positive Control: HepG2 cell lysate

Please note: All products are 'FOR RESEARCH USE ONLY. NOT FOR USE IN DIAGNOSTIC OR THERAPEUTIC PROCEDURES'.