

CLIC2 antibody - middle region

Rabbit Polyclonal Antibody

Catalog # AI10780

Product Information

Application	WB
Primary Accession	O15247
Other Accession	NM_001289 , NP_001280
Reactivity	Human, Rat, Rabbit, Dog, Horse, Bovine
Predicted	Human, Rat, Rabbit, Pig, Dog, Bovine
Host	Rabbit
Clonality	Polyclonal
Calculated MW	28356

Additional Information

Gene ID	1193
Alias Symbol	CLIC2b, XAP121
Other Names	Chloride intracellular channel protein 2, XAP121, CLIC2
Format	Liquid. Purified antibody supplied in 1x PBS buffer with 0.09% (w/v) sodium azide and 2% sucrose.
Reconstitution & Storage	Add 100 ul of distilled water. Final anti-CLIC2 antibody concentration is 1 mg/ml in PBS buffer with 2% sucrose. For longer periods of storage, store at 20°C. Avoid repeat freeze-thaw cycles.
Precautions	CLIC2 antibody - middle region is for research use only and not for use in diagnostic or therapeutic procedures.

Protein Information

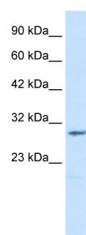
Name	CLIC2 {ECO:0000303 PubMed:9339381, ECO:0000312 HGNC:HGNC:2063}
Function	In the soluble state, catalyzes glutaredoxin-like thiol disulfide exchange reactions with reduced glutathione as electron donor. Displays weak glutathione peroxidase activity (Probable) (PubMed: 25581026). Can insert into membranes and form chloride ion channels. Membrane insertion seems to be redox-regulated and may occur only under oxidizing conditions. Modulates the activity of RYR2 and inhibits calcium influx.
Cellular Location	Cytoplasm. Membrane; Single-pass membrane protein. Note=Exists both as soluble cytoplasmic protein and as membrane protein with probably a single transmembrane domain

Tissue Location	Expressed in adult and fetal brain, heart, skeletal muscle, liver, lung, and spleen. Detected in adult stomach and testis Expressed in fetal thymus and kidney.
------------------------	---

References

Fan,L., et al., (2003) FEBS Lett. 540 (1-3), 77-80
Reconstitution and Storage:For short term use, store at 2-8C up to 1 week. For long term storage, store at -20C in small aliquots to prevent freeze-thaw cycles.

Images



WB Suggested Anti-CLIC2 Antibody Titration: 1.25µg/ml
 ELISA Titer: 1:62500
 Positive Control: Jurkat cell lysate

Please note: All products are 'FOR RESEARCH USE ONLY. NOT FOR USE IN DIAGNOSTIC OR THERAPEUTIC PROCEDURES'.