

KCNS1 antibody - N-terminal region

Rabbit Polyclonal Antibody

Catalog # AI10790

Product Information

Application	WB
Primary Accession	Q96KK3
Other Accession	NM_002251 , NP_002242
Reactivity	Human
Predicted	Human
Host	Rabbit
Clonality	Polyclonal
Calculated MW	58372

Additional Information

Gene ID	3787
Alias Symbol	KV9.1
Other Names	Potassium voltage-gated channel subfamily S member 1, Delayed-rectifier K(+) channel alpha subunit 1, Voltage-gated potassium channel subunit Kv9.1, KCNS1
Format	Liquid. Purified antibody supplied in 1x PBS buffer with 0.09% (w/v) sodium azide and 2% sucrose.
Reconstitution & Storage	Add 50 ul of distilled water. Final anti-KCNS1 antibody concentration is 1 mg/ml in PBS buffer with 2% sucrose. For longer periods of storage, store at 20°C. Avoid repeat freeze-thaw cycles.
Precautions	KCNS1 antibody - N-terminal region is for research use only and not for use in diagnostic or therapeutic procedures.

Protein Information

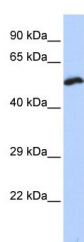
Name	KCNS1 (HGNC:6300)
Function	Potassium channel regulatory subunit that modulate the delayed rectifier voltage-gated potassium channel activity of KCNB1 and KCNB2 by altering their kinetics, expression levels, and shifting the half-inactivation potential to more polarized values (PubMed: 10484328). While it does not form functional channels on its own, it can form functional heterotetrameric channels with KCNB1 and KCNB2 (PubMed: 10484328). Each regulatory subunit has unique regulatory properties that can lead to extensive inhibition, significant changes in kinetics, and/or substantial shifts in the voltage dependencies of the inactivation process (By similarity).

Cellular Location	Cell membrane; Multi-pass membrane protein. Note=May not reach the plasma membrane but remain in an intracellular compartment in the absence of KCNB1 or KCNB2 (PubMed:10484328)
Tissue Location	Detected in all tissues tested with the exception of skeletal muscle (PubMed:10484328). Highly expressed in adult and fetal brain, fetal kidney and lung, and adult prostate and testis (PubMed:10484328).

References

Gutman,G.A., (2005) Pharmacol. Rev. 57 (4), 473-508 Reconstitution and Storage:For short term use, store at 2-8C up to 1 week. For long term storage, store at -20C in small aliquots to prevent freeze-thaw cycles.

Images



WB Suggested Anti-KCNS1 Antibody Titration: 0.2-1 µg/ml
 ELISA Titer: 1:1562500
 Positive Control: Hela cell lysate

Please note: All products are 'FOR RESEARCH USE ONLY. NOT FOR USE IN DIAGNOSTIC OR THERAPEUTIC PROCEDURES'.