

VDAC1 antibody - C-terminal region

Rabbit Polyclonal Antibody

Catalog # AI10793

Product Information

Application	WB, IHC
Primary Accession	Q5FVE7
Other Accession	NM_003374 , NP_003365
Reactivity	Human, Mouse, Rat, Rabbit, Zebrafish, Dog, Horse, Bovine, Sheep
Predicted	Human, Mouse, Rat, Rabbit, Pig, Chicken, Dog, Horse, Bovine
Host	Rabbit
Clonality	Polyclonal
Calculated MW	31 KDa

Additional Information

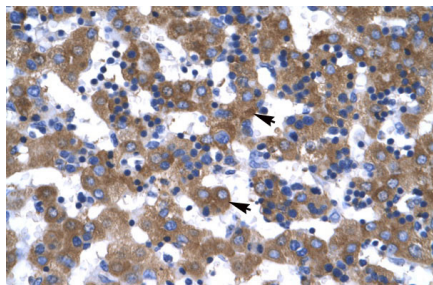
Alias Symbol	PORIN, VDAC-1
Format	Liquid. Purified antibody supplied in 1x PBS buffer with 0.09% (w/v) sodium azide and 2% sucrose.
Reconstitution & Storage	Add 100 ul of distilled water. Final anti-VDAC1 antibody concentration is 1 mg/ml in PBS buffer with 2% sucrose. For longer periods of storage, store at 20°C. Avoid repeat freeze-thaw cycles.
Precautions	VDAC1 antibody - C-terminal region is for research use only and not for use in diagnostic or therapeutic procedures.

Protein Information

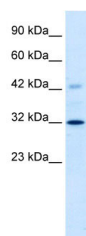
References

Zheng, Y., et al., (2004) Oncogene 23 (6), 1239-1247
Reconstitution and Storage: For short term use, store at 2-8°C up to 1 week. For long term storage, store at -20°C in small aliquots to prevent freeze-thaw cycles.
Publications: Chen, S. et al. Reduced expression of lamin A/C results in modified cell signaling and metabolism coupled with changes in expression of structural proteins. J. Proteome Res. 8, 5196-211 (2009).
WB, IHC, Sheep, Human, Rat, Bovine, Dog, H, Guinea pig, Mouse, Rabbit, Zebrafish 19775189
Arduíno, D. M. et al. Mitochondrial metabolism in Parkinson's disease impairs quality control autophagy by hampering microtubule-dependent traffic. Hum. Mol. Genet. 21, 4680-702 (2012). WB, IHC, Sheep, Human, Rat, Bovine, Dog, H, Guinea pig, Mouse, Rabbit, Zebrafish 22843496
Rousset, F., Nguyen, M. V. C., Grange, L., Morel, F. & Lardy, B. Heme oxygenase-1 regulates matrix metalloproteinase MMP-1 secretion and chondrocyte cell death via Nox4 NADPH oxidase activity in chondrocytes. PLoS One 8, e66478 (2013). WB, IHC, Sheep, Human, Rat, Bovine, Dog, H, Guinea pig, Mouse, Rabbit, Zebrafish 23840483

Images



Rabbit Anti-VDAC1 Antibody
 Paraffin Embedded Tissue: Human Liver
 Cellular Data: Hepatocytes
 Antibody Concentration: 4.0-8.0 µg/ml
 Magnification: 400X



WB Suggested Anti-VDAC1 Antibody Titration: 1.25µg/ml
 ELISA Titer: 1:312500
 Positive Control: HepG2 cell lysate
 VDAC1 is strongly supported by BioGPS gene expression data to be expressed in Human HepG2 cells

Please note: All products are 'FOR RESEARCH USE ONLY. NOT FOR USE IN DIAGNOSTIC OR THERAPEUTIC PROCEDURES'.