

TRPC6 antibody - middle region

Rabbit Polyclonal Antibody

Catalog # AI10797

Product Information

Application	WB
Primary Accession	Q9Y210
Other Accession	NM_004621 , NP_004612
Reactivity	Human, Mouse, Rat, Pig, Dog, Horse, Bovine, Yeast
Predicted	Human, Mouse, Rat
Host	Rabbit
Clonality	Polyclonal
Calculated MW	106326

Additional Information

Gene ID	7225
Alias Symbol	FLJ11098, FLJ14863, FSGS2, TRP6
Other Names	Short transient receptor potential channel 6, TrpC6, Transient receptor protein 6, TRP-6, TRPC6, TRP6
Format	Liquid. Purified antibody supplied in 1x PBS buffer with 0.09% (w/v) sodium azide and 2% sucrose.
Reconstitution & Storage	Add 50 ul of distilled water. Final anti-TRPC6 antibody concentration is 1 mg/ml in PBS buffer with 2% sucrose. For longer periods of storage, store at 20°C. Avoid repeat freeze-thaw cycles.
Precautions	TRPC6 antibody - middle region is for research use only and not for use in diagnostic or therapeutic procedures.

Protein Information

Name	TRPC6 {ECO:0000303 PubMed:9930701, ECO:0000312 HGNC:HGNC:12338}
Function	Forms a receptor-activated non-selective calcium permeant cation channel (PubMed: 19936226 , PubMed: 23291369 , PubMed: 26892346 , PubMed: 9930701). Probably is operated by a phosphatidylinositol second messenger system activated by receptor tyrosine kinases or G-protein coupled receptors. Activated by diacylglycerol (DAG) in a membrane-delimited fashion, independently of protein kinase C (PubMed: 26892346). Seems not to be activated by intracellular calcium store depletion.
Cellular Location	Cell membrane; Multi-pass membrane protein

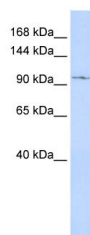
Tissue Location

Expressed primarily in placenta, lung, spleen, ovary and small intestine.
Expressed in podocytes and is a component of the glomerular slit diaphragm.

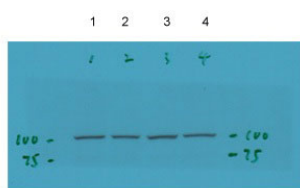
References

Liu,D., (2008) Arterioscler. Thromb. Vasc. Biol. 28 (4), 746-751 Reconstitution and Storage:For short term use, store at 2-8C up to 1 week. For long term storage, store at -20C in small aliquots to prevent freeze-thaw cycles.

Images



WB Suggested Anti-TRPC6 Antibody Titration: 0.2-1 µg/ml
ELISA Titer: 1:312500
Positive Control: MCF7 cell lysate



Lane 1: Normoxia Control (16% O₂)

Lane 2: CPT-cGMP (100uM) 60-hour treatment under Normoxia (16% O₂)

Lane 3: Hypoxia Control (4% O₂)

Lane 4: CPT-cGMP (100uM) 60-hour treatment under Hypoxia (4% O₂)

TRPC6 antibody - middle region (A110797) validated by WB using pulmonary artery smooth muscle

Citations

- [Doxorubicin-Induced Fetal Mesangial Cell Death Occurs Independently of TRPC6 Channel Upregulation but Involves Mitochondrial Generation of Reactive Oxygen Species](#)

Please note: All products are 'FOR RESEARCH USE ONLY. NOT FOR USE IN DIAGNOSTIC OR THERAPEUTIC PROCEDURES'.