

KCNA10 antibody - middle region

Rabbit Polyclonal Antibody

Catalog # AI10799

Product Information

Application	WB, IHC
Primary Accession	Q16322
Other Accession	NM_005549 , NP_005540
Reactivity	Human, Mouse, Rat, Dog, Bovine
Predicted	Mouse, Rat, Bovine
Host	Rabbit
Clonality	Polyclonal
Calculated MW	57785

Additional Information

Gene ID	3744
Alias Symbol	Kcn1, Kv1.8
Other Names	Potassium voltage-gated channel subfamily A member 10, Voltage-gated potassium channel subunit Kv1.8, KCNA10
Format	Liquid. Purified antibody supplied in 1x PBS buffer with 0.09% (w/v) sodium azide and 2% sucrose.
Reconstitution & Storage	Add 100 ul of distilled water. Final anti-KCNA10 antibody concentration is 1 mg/ml in PBS buffer with 2% sucrose. For longer periods of storage, store at 20°C. Avoid repeat freeze-thaw cycles.
Precautions	KCNA10 antibody - middle region is for research use only and not for use in diagnostic or therapeutic procedures.

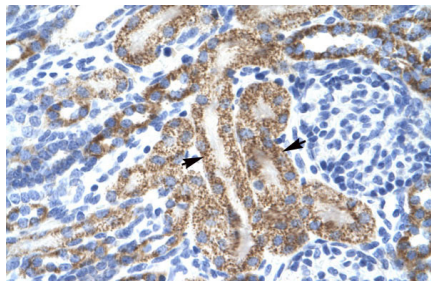
Protein Information

Name	KCNA10 (HGNC:6219)
Function	Voltage-gated potassium ion channel that mediates K(+) permeability of excitable membranes. When opened in response to the voltage difference across the membrane, KCNA10 channel selectively allows the flow of potassium ions across the membrane down their electrochemical gradient.
Cellular Location	Membrane; Multi-pass membrane protein
Tissue Location	Detected in kidney, in proximal tubules, glomerular endothelium, in vascular endothelium and in smooth muscle cells

References

Yao,X., et al., (2002) J. Am. Soc. Nephrol. 13 (12), 2831-2839
Reconstitution and Storage: For short term use, store at 2-8C up to 1 week. For long term storage, store at -20C in small aliquots to prevent freeze-thaw cycles.

Images



Human kidney



WB Suggested Anti-KCNA10 Antibody Titration: 1.25µg/ml
ELISA Titer: 1:312500
Positive Control: Jurkat cell lysate

Please note: All products are 'FOR RESEARCH USE ONLY. NOT FOR USE IN DIAGNOSTIC OR THERAPEUTIC PROCEDURES'.