

# Gria3 antibody - N-terminal region

Rabbit Polyclonal Antibody

Catalog # AI10803

## Product Information

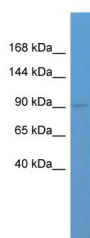
<b>Application</b>	WB
<b>Primary Accession</b>	<a href="#">A2VDF5</a>
<b>Other Accession</b>	<a href="#">NM_016886</a> , <a href="#">NP_058582</a>
<b>Reactivity</b>	Human, Mouse, Rat, Rabbit, Zebrafish, Pig, Dog, Horse, Bovine
<b>Predicted</b>	Human, Mouse, Rat, Rabbit, Zebrafish, Pig, Chicken, Bovine
<b>Host</b>	Rabbit
<b>Clonality</b>	Polyclonal
<b>Calculated MW</b>	100 kDa

## Additional Information

<b>Alias Symbol</b>	2900064I19Rik, GluR-C, GluR-K3, Glur-3, Glur3, Gluralpha3, KIAA4184, mKIAA4184, GluA3
<b>Format</b>	Liquid. Purified antibody supplied in 1x PBS buffer with 0.09% (w/v) sodium azide and 2% sucrose.
<b>Reconstitution &amp; Storage</b>	Add 50 ul of distilled water. Final anti-Gria3 antibody concentration is 1 mg/ml in PBS buffer with 2% sucrose. For longer periods of storage, store at 20°C. Avoid repeat freeze-thaw cycles.
<b>Precautions</b>	Gria3 antibody - N-terminal region is for research use only and not for use in diagnostic or therapeutic procedures.

## Protein Information

## Images



WB Suggested Anti-Gria3 Antibody Titration: 0.2-1 µg/ml  
ELISA Titer: 1:2500  
Positive Control: Mouse Liver