

# SCN8A Antibody - C-terminal region

Rabbit Polyclonal Antibody

Catalog # AI10806

## Product Information

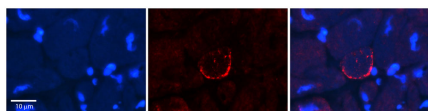
<b>Application</b>	WB
<b>Primary Accession</b>	<a href="#">F8W0Q0</a>
<b>Reactivity</b>	Human, Mouse, Rat, Rabbit, Pig, Dog, Horse, Bovine
<b>Predicted</b>	Human, Mouse, Rat, Rabbit, Pig, Dog, Horse, Bovine
<b>Host</b>	Rabbit
<b>Clonality</b>	Polyclonal
<b>Calculated MW</b>	52 kDa

## Additional Information

<b>Format</b>	Liquid. Purified antibody supplied in 1x PBS buffer with 0.09% (w/v) sodium azide and 2% sucrose.
<b>Reconstitution &amp; Storage</b>	Add 50 µl of distilled water. Final Anti-SCN8A antibody concentration is 1 mg/ml in PBS buffer with 2% sucrose. For longer periods of storage, store at -20°C. Avoid repeat freeze-thaw cycles.
<b>Precautions</b>	SCN8A Antibody - C-terminal region is for research use only and not for use in diagnostic or therapeutic procedures.

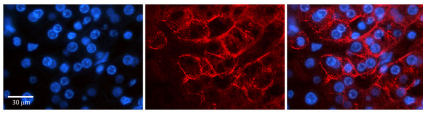
## Protein Information

## Images

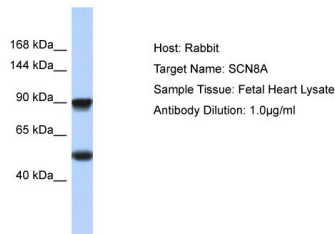


Rabbit Anti-SCN8A Antibody  
Catalog Number: AI10806  
Formalin Fixed Paraffin Embedded Tissue: Human Adult heart  
Observed Staining: Membrane  
Primary Antibody  
Concentration: 1:100  
Secondary Antibody: Donkey anti-Rabbit-Cy2/3 Secondary Antibody  
Concentration: 1:200  
Magnification: 20X  
Exposure Time: 0.5 – 2.0 sec  
Protocol located in Reviews and Data.

Rabbit Anti-SCN8A Antibody  
Catalog Number: AI10806



Formalin Fixed Paraffin Embedded Tissue: Human Adult liver  
Observed Staining: Membrane  
Primary Antibody  
Concentration: 1:100  
Secondary Antibody: Donkey anti-Rabbit-Cy2/3  
Secondary Antibody  
Concentration: 1:200  
Magnification: 20X  
Exposure Time: 0.5 – 2.0 sec  
Protocol located in Reviews and Data.



Host: Rabbit  
Target Name: SCN8A  
Sample Tissue: Fetal Heart lysates  
Antibody Dilution: 1.0µg/ml

Please note: All products are 'FOR RESEARCH USE ONLY. NOT FOR USE IN DIAGNOSTIC OR THERAPEUTIC PROCEDURES'.