

# Kctd3 antibody - middle region

Rabbit Polyclonal Antibody

Catalog # AI10809

## Product Information

---

<b>Application</b>	WB
<b>Primary Accession</b>	<a href="#">Q8BFX3</a>
<b>Other Accession</b>	<a href="#">NM_172650</a> , <a href="#">NP_766238</a>
<b>Reactivity</b>	Human, Mouse, Rat, Rabbit, Zebrafish, Pig, Dog, Horse, Bovine
<b>Predicted</b>	Human, Mouse, Rat, Rabbit, Zebrafish, Pig, Chicken, Bovine
<b>Host</b>	Rabbit
<b>Clonality</b>	Polyclonal
<b>Calculated MW</b>	88862

## Additional Information

---

<b>Gene ID</b>	226823
<b>Alias Symbol</b> <b>Other Names</b>	4930438A20Rik, 9330185B06, E330032J19Rik, NY-REN-45 BTB/POZ domain-containing protein KCTD3, Kctd3
<b>Format</b>	Liquid. Purified antibody supplied in 1x PBS buffer with 0.09% (w/v) sodium azide and 2% sucrose.
<b>Reconstitution &amp; Storage</b>	Add 50 ul of distilled water. Final anti-Kctd3 antibody concentration is 1 mg/ml in PBS buffer with 2% sucrose. For longer periods of storage, store at 20°C. Avoid repeat freeze-thaw cycles.
<b>Precautions</b>	Kctd3 antibody - middle region is for research use only and not for use in diagnostic or therapeutic procedures.

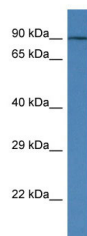
## Protein Information

---

<b>Name</b>	Kctd3
<b>Function</b>	Accessory subunit of potassium/sodium hyperpolarization- activated cyclic nucleotide-gated channel 3 (HCN3) up-regulating its cell-surface expression and current density without affecting its voltage dependence and kinetics.
<b>Cellular Location</b>	Cell membrane.
<b>Tissue Location</b>	Brain (at protein level). Expressed in the liver kidney, and heart.

## Images

---



WB Suggested Anti-Kctd3 Antibody Titration: 1.0 µg/ml  
Positive Control: Mouse Liver

Please note: All products are 'FOR RESEARCH USE ONLY. NOT FOR USE IN DIAGNOSTIC OR THERAPEUTIC PROCEDURES'.