

# CLIC5 antibody - C-terminal region

Rabbit Polyclonal Antibody

Catalog # AI10811

## Product Information

---

<b>Application</b>	WB, IHC
<b>Primary Accession</b>	<a href="#">Q53G01</a>
<b>Other Accession</b>	<a href="#">NM_016929</a> , <a href="#">NP_058625</a>
<b>Reactivity</b>	Human, Mouse, Rat, Rabbit, Zebrafish, Pig, Dog, Horse, Bovine
<b>Predicted</b>	Human, Mouse, Rat, Pig, Chicken
<b>Host</b>	Rabbit
<b>Clonality</b>	Polyclonal
<b>Calculated MW</b>	28 kDa

## Additional Information

---

<b>Alias Symbol</b>	MST130, MSTP130
<b>Format</b>	Liquid. Purified antibody supplied in 1x PBS buffer with 0.09% (w/v) sodium azide and 2% sucrose.
<b>Reconstitution &amp; Storage</b>	Add 50 ul of distilled water. Final anti-CLIC5 antibody concentration is 1 mg/ml in PBS buffer with 2% sucrose. For longer periods of storage, store at 20°C. Avoid repeat freeze-thaw cycles.
<b>Precautions</b>	CLIC5 antibody - C-terminal region is for research use only and not for use in diagnostic or therapeutic procedures.

## Protein Information

---

## References

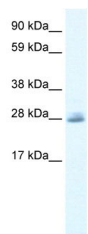
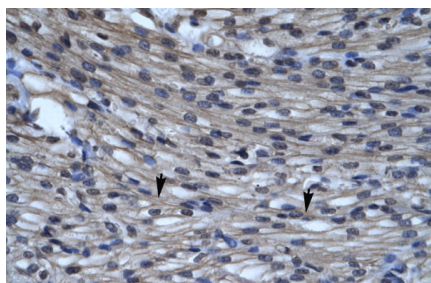
---

Berryman, M., et al., (2004) J. Biol. Chem. 279 (33), 34794-34801  
Reconstitution and Storage: For short term use, store at 2-8°C up to 1 week. For long term storage, store at -20°C in small aliquots to prevent freeze-thaw cycles.

## Images

---

Human Heart



WB Suggested Anti-CLIC5 Antibody Titration: 0.2-1 µg/ml  
ELISA Titer: 1:1562500  
Positive Control: Jurkat cell lysate  
There is BioGPS gene expression data showing that CLIC5 is expressed in Jurkat

Please note: All products are 'FOR RESEARCH USE ONLY. NOT FOR USE IN DIAGNOSTIC OR THERAPEUTIC PROCEDURES'.