

GRIK2 antibody - C-terminal region

Rabbit Polyclonal Antibody

Catalog # AI10821

Product Information

| | |
|--------------------------|---|
| Application | WB |
| Primary Accession | Q96KS6 |
| Other Accession | NM_175768 , NP_786944 |
| Reactivity | Human, Mouse, Rat, Rabbit, Zebrafish, Pig, Dog, Horse, Bovine |
| Predicted | Human, Mouse, Rat, Rabbit, Pig, Chicken, Bovine |
| Host | Rabbit |
| Clonality | Polyclonal |
| Calculated MW | 98 KDa |

Additional Information

| | |
|-------------------------------------|--|
| Alias Symbol | EAA4, GLR6, MRT6, GLUK6, GLUR6, GluK2 |
| Format | Liquid. Purified antibody supplied in 1x PBS buffer with 0.09% (w/v) sodium azide and 2% sucrose. |
| Reconstitution & Storage | Add 50 ul of distilled water. Final anti-GRIK2 antibody concentration is 1 mg/ml in PBS buffer with 2% sucrose. For longer periods of storage, store at 20°C. Avoid repeat freeze-thaw cycles. |
| Precautions | GRIK2 antibody - C-terminal region is for research use only and not for use in diagnostic or therapeutic procedures. |

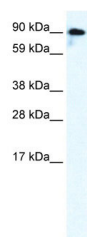
Protein Information

References

Bah,J., et al., (2004) Neuroreport 15 (12), 1987-1991
Reconstitution and Storage:For short term use, store at 2-8C up to 1 week. For long term storage, store at -20C in small aliquots to prevent freeze-thaw cycles.

Images

WB Suggested Anti-GRIK2 Antibody Titration: 0.125µg/ml
ELISA Titer: 1:62500
Positive Control: Human brain



Please note: All products are 'FOR RESEARCH USE ONLY. NOT FOR USE IN DIAGNOSTIC OR THERAPEUTIC PROCEDURES'.