

# CHRFAM7A antibody - middle region

Rabbit Polyclonal Antibody

Catalog # AI10829

## Product Information

Application	WB
Primary Accession	<a href="#">Q8IUZ4</a>
Other Accession	<a href="#">NM_148911</a> , <a href="#">NP_683709</a>
Reactivity	Human, Mouse, Rat, Rabbit, Zebrafish, Dog, Horse, Bovine
Predicted	Human, Mouse, Rat, Zebrafish, Pig, Chicken, Bovine
Host	Rabbit
Clonality	Polyclonal
Calculated MW	35 KDa

## Additional Information

Alias Symbol	CHRNA7, CHRNA7-DR1, D-10, MGC120482, MGC120483
Format	Liquid. Purified antibody supplied in 1x PBS buffer with 0.09% (w/v) sodium azide and 2% sucrose.
Reconstitution & Storage	Add 50 ul of distilled water. Final anti-CHRFAM7A antibody concentration is 1 mg/ml in PBS buffer with 2% sucrose. For longer periods of storage, store at 20°C. Avoid repeat freeze-thaw cycles.
Precautions	CHRFAM7A antibody - middle region is for research use only and not for use in diagnostic or therapeutic procedures.

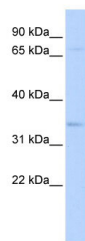
## Protein Information

## References

Martin, L.F., (2007) Am. J. Med. Genet. B Neuropsychiatr. Genet. 144 (5), 611-614 Reconstitution and Storage: For short term use, store at 2-8°C up to 1 week. For long term storage, store at -20°C in small aliquots to prevent freeze-thaw cycles.

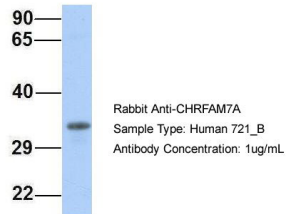
## Images

WB Suggested Anti-CHRFAM7A Antibody Titration: 0.2-1 µg/ml  
ELISA Titer: 1:62500  
Positive Control: 293T cell lysate  
CHRFAM7A is supported by BioGPS gene expression data



to be expressed in HEK293T

### CHRFAM7A



Host:Rabbit

Target Name:CHRFAM7A

Sample Tissue:721\_B

Antibody Dilution: 1.0µg/mLCHRFAM7A is supported by BioGPS gene expression data to be expressed in 721\_B

Please note: All products are 'FOR RESEARCH USE ONLY. NOT FOR USE IN DIAGNOSTIC OR THERAPEUTIC PROCEDURES'.