

CHRFAM7A antibody - N-terminal region

Rabbit Polyclonal Antibody

Catalog # AI10830

Product Information

Application	WB
Primary Accession	Q494W8
Other Accession	NM_139320 , NP_647536
Reactivity	Human, Mouse, Rat, Rabbit, Zebrafish, Pig, Dog, Horse, Bovine
Predicted	Human, Mouse, Rat, Zebrafish, Chicken, Bovine, Cat
Host	Rabbit
Clonality	Polyclonal
Calculated MW	46218

Additional Information

Gene ID	89832
Alias Symbol	D-10, CHRNA7, CHRNA7-DR1
Other Names	CHRNA7-FAM7A fusion protein, CHRNA7-DR1, D-10, CHRFAM7A
Format	Liquid. Purified antibody supplied in 1x PBS buffer with 0.09% (w/v) sodium azide and 2% sucrose.
Reconstitution & Storage	Add 50 ul of distilled water. Final anti-CHRFAM7A antibody concentration is 1 mg/ml in PBS buffer with 2% sucrose. For longer periods of storage, store at 20°C. Avoid repeat freeze-thaw cycles.
Precautions	CHRFAM7A antibody - N-terminal region is for research use only and not for use in diagnostic or therapeutic procedures.

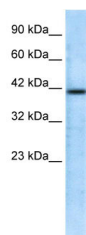
Protein Information

Name	CHRFAM7A
Cellular Location	Membrane; Multi-pass membrane protein
Tissue Location	Expressed in hippocampus.

References

Trombino, S., et al., (2004) Cancer Res. 64 (1), 135-145
Reconstitution and Storage: For short term use, store at 2-8°C up to 1 week. For long term storage, store at -20°C in small aliquots to prevent freeze-thaw cycles.

Images



WB Suggested Anti-CHRFAM7A Antibody Titration: 0.2-1 $\mu\text{g/ml}$

ELISA Titer: 1:62500

Positive Control: Jurkat cell lysate

CHRFAM7A is supported by BioGPS gene expression data to be expressed in Jurkat

Please note: All products are 'FOR RESEARCH USE ONLY. NOT FOR USE IN DIAGNOSTIC OR THERAPEUTIC PROCEDURES'.