

KCNMB3 antibody - middle region

Rabbit Polyclonal Antibody

Catalog # AI10835

Product Information

Application	WB
Primary Accession	Q9NPA1-2
Other Accession	NM_171828 , NP_741979
Reactivity	Human, Rat, Dog
Predicted	Human
Host	Rabbit
Clonality	Polyclonal
Calculated MW	31 KDa

Additional Information

Alias Symbol	KCNMB2, KCNMBL, HBETA3, BKBETA3, SLOBETA3
Format	Liquid. Purified antibody supplied in 1x PBS buffer with 0.09% (w/v) sodium azide and 2% sucrose.
Reconstitution & Storage	Add 50 ul of distilled water. Final anti-KCNMB3 antibody concentration is 1 mg/ml in PBS buffer with 2% sucrose. For longer periods of storage, store at 20°C. Avoid repeat freeze-thaw cycles.
Precautions	KCNMB3 antibody - middle region is for research use only and not for use in diagnostic or therapeutic procedures.

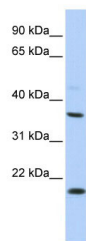
Protein Information

References

Lorenz,S., (2007) Am. J. Med. Genet. B Neuropsychiatr. Genet. 144 (1), 10-13
Reconstitution and Storage:For short term use, store at 2-8C up to 1 week. For long term storage, store at -20C in small aliquots to prevent freeze-thaw cycles.

Images

WB Suggested Anti-KCNMB3 Antibody Titration: 0.2-1
µg/ml
ELISA Titer: 1:62500
Positive Control: HepG2 cell lysate



Please note: All products are 'FOR RESEARCH USE ONLY. NOT FOR USE IN DIAGNOSTIC OR THERAPEUTIC PROCEDURES'.