

CATSPER2 antibody - C-terminal region

Rabbit Polyclonal Antibody

Catalog # AI10836

Product Information

Application	WB
Primary Accession	Q96P56
Other Accession	NM_054020 , NP_473361
Reactivity	Human, Mouse, Rat, Rabbit, Pig, Dog, Horse, Bovine, Yeast
Predicted	Human, Rabbit, Pig, Bovine
Host	Rabbit
Clonality	Polyclonal
Calculated MW	62041

Additional Information

Gene ID	117155
Other Names	Cation channel sperm-associated protein 2, CatSper2, CATSPER2
Format	Liquid. Purified antibody supplied in 1x PBS buffer with 0.09% (w/v) sodium azide and 2% sucrose.
Reconstitution & Storage	Add 100 ul of distilled water. Final anti-CATSPER2 antibody concentration is 1 mg/ml in PBS buffer with 2% sucrose. For longer periods of storage, store at 20°C. Avoid repeat freeze-thaw cycles.
Precautions	CATSPER2 antibody - C-terminal region is for research use only and not for use in diagnostic or therapeutic procedures.

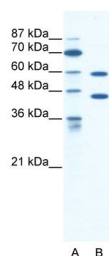
Protein Information

Name	CATSPER2
Function	Pore-forming subunit of the CatSper complex, a sperm-specific voltage-gated calcium channel, that plays a central role in calcium- dependent physiological responses essential for successful fertilization, such as sperm hyperactivation, acrosome reaction and chemotaxis towards the oocyte.
Cellular Location	Cell projection, cilium, flagellum membrane {ECO:0000250 UniProtKB:A2ARP9}; Multi-pass membrane protein {ECO:0000250 UniProtKB:A2ARP9}
Tissue Location	Testis-specific.

References

Quill,T.A., et al., (2001) Proc. Natl. Acad. Sci. U.S.A. 98 (22), 12527-12531
Reconstitution and Storage:For short term use, store at 2-8C up to 1 week. For long term storage, store at -20C in small aliquots to prevent freeze-thaw cycles.

Images



WB Suggested Anti-CATSPER2 Antibody Titration:

1.25µg/ml

ELISA Titer: 1:312500

Positive Control: HepG2 cell lysate

Please note: All products are 'FOR RESEARCH USE ONLY. NOT FOR USE IN DIAGNOSTIC OR THERAPEUTIC PROCEDURES'.