

KCNQ2 antibody - N-terminal region

Rabbit Polyclonal Antibody

Catalog # AI10837

Product Information

Application	WB
Primary Accession	Q5VYT9
Other Accession	NM_004518 , NP_004509
Reactivity	Human, Mouse, Rat, Rabbit, Zebrafish, Dog, Horse, Bovine
Predicted	Human, Mouse, Rat, Zebrafish, Chicken, Dog, Horse, Bovine
Host	Rabbit
Clonality	Polyclonal
Calculated MW	93 KDa

Additional Information

Alias Symbol	BFNC, EBN, EBN1, ENB1, HNSPC, KCNA11, KV7.2, KVEBN1, BFNS1, EIEE7
Format	Liquid. Purified antibody supplied in 1x PBS buffer with 0.09% (w/v) sodium azide and 2% sucrose.
Reconstitution & Storage	Add 50 ul of distilled water. Final anti-KCNQ2 antibody concentration is 1 mg/ml in PBS buffer with 2% sucrose. For longer periods of storage, store at 20°C. Avoid repeat freeze-thaw cycles.
Precautions	KCNQ2 antibody - N-terminal region is for research use only and not for use in diagnostic or therapeutic procedures.

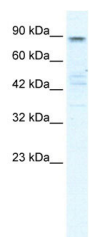
Protein Information

References

Tang,B., et al., (2004) J. Neurol. Sci. 221 (1-2), 31-34
Reconstitution and Storage: For short term use, store at 2-8C up to 1 week. For long term storage, store at -20C in small aliquots to prevent freeze-thaw cycles.

Images

WB Suggested Anti-KCNQ2 Antibody Titration: 0.2-1 µg/ml
ELISA Titer: 1:12500
Positive Control: HepG2 cell lysate



Please note: All products are 'FOR RESEARCH USE ONLY. NOT FOR USE IN DIAGNOSTIC OR THERAPEUTIC PROCEDURES'.