

# KCNQ2 antibody - middle region

Rabbit Polyclonal Antibody

Catalog # AI10838

## Product Information

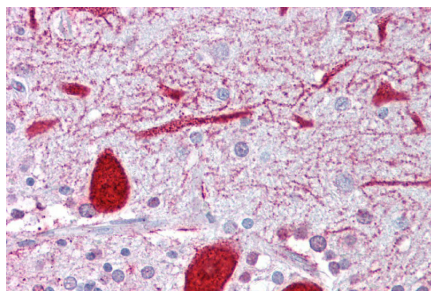
<b>Application</b>	WB, IHC
<b>Primary Accession</b>	<a href="#">Q53Y30</a>
<b>Other Accession</b>	<a href="#">NM_172109</a> , <a href="#">NP_742107</a>
<b>Reactivity</b>	Human, Mouse, Rat, Rabbit, Zebrafish, Dog, Horse, Bovine
<b>Predicted</b>	Human, Mouse, Rat, Zebrafish, Chicken, Dog, Horse, Bovine
<b>Host</b>	Rabbit
<b>Clonality</b>	Polyclonal
<b>Calculated MW</b>	44 KDa

## Additional Information

<b>Alias Symbol</b>	BFNC, EBN, EBN1, ENB1, HNSPC, KCNA11, KV7.2, KVEBN1, BFNS1, EIEE7
<b>Format</b>	Liquid. Purified antibody supplied in 1x PBS buffer with 0.09% (w/v) sodium azide and 2% sucrose.
<b>Reconstitution &amp; Storage</b>	Add 50 ul of distilled water. Final anti-KCNQ2 antibody concentration is 1 mg/ml in PBS buffer with 2% sucrose. For longer periods of storage, store at 20°C. Avoid repeat freeze-thaw cycles.
<b>Precautions</b>	KCNQ2 antibody - middle region is for research use only and not for use in diagnostic or therapeutic procedures.

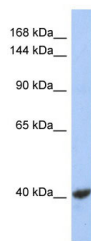
## Protein Information

## Images



Immunohistochemistry with Brain, cerebellum tissue at an antibody concentration of 5µg/ml using anti-KCNQ2 antibody (AI10838)

WB Suggested Anti-KCNQ2 Antibody Titration: 0.2-1 µg/ml  
ELISA Titer: 1:312500



Positive Control: NCI-H226 cell lysate  
There is BioGPS gene expression data showing that  
KCNQ2 is expressed in NCIH226

Please note: All products are 'FOR RESEARCH USE ONLY. NOT FOR USE IN DIAGNOSTIC OR THERAPEUTIC PROCEDURES'.