

KCNQ2 antibody - middle region

Rabbit Polyclonal Antibody

Catalog # AI10839

Product Information

Application	WB, IHC
Primary Accession	Q5VYU0
Other Accession	NM_172109 , NP_742107
Reactivity	Human, Mouse, Rat, Rabbit, Zebrafish, Dog, Horse, Bovine
Predicted	Human, Mouse, Rat, Zebrafish, Chicken, Dog, Horse, Bovine
Host	Rabbit
Clonality	Polyclonal
Calculated MW	43 KDa

Additional Information

Alias Symbol	EBN, BFNC, EBN1, ENB1, BFNS1, EIEE7, HNSPC, KV7.2, KCNA11, KVEBN1
Format	Liquid. Purified antibody supplied in 1x PBS buffer with 0.09% (w/v) sodium azide and 2% sucrose.
Reconstitution & Storage	Add 100 ul of distilled water. Final anti-KCNQ2 antibody concentration is 1 mg/ml in PBS buffer with 2% sucrose. For longer periods of storage, store at 20°C. Avoid repeat freeze-thaw cycles.
Precautions	KCNQ2 antibody - middle region is for research use only and not for use in diagnostic or therapeutic procedures.

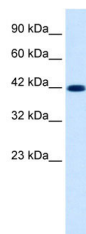
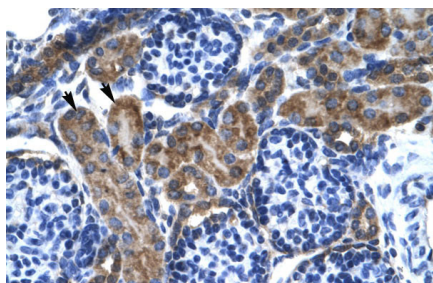
Protein Information

References

Tang,B., et al., (2004) J. Neurol. Sci. 221 (1-2), 31-34
Reconstitution and Storage: For short term use, store at 2-8C up to 1 week. For long term storage, store at -20C in small aliquots to prevent freeze-thaw cycles.
Publications: Zhang, H. et al. Membrane microdomain determines the specificity of receptor-mediated modulation of Kv7/M potassium currents. Neuroscience 254, 70-9 (2013). WB, Human, Mouse, Rat, Bovine, Dog, H, Guinea pig, Zebrafish, Rabbit 24036375

Images

Human kidney



WB Suggested Anti-KCNQ2 Antibody Titration: 1.25µg/ml
ELISA Titer: 1:62500
Positive Control: HepG2 cell lysate

Please note: All products are 'FOR RESEARCH USE ONLY. NOT FOR USE IN DIAGNOSTIC OR THERAPEUTIC PROCEDURES'.