

KCNAB2 antibody - middle region

Rabbit Polyclonal Antibody

Catalog # AI10840

Product Information

Application	WB
Primary Accession	Q6FG44
Other Accession	NM_172130 , NP_742128
Reactivity	Human, Mouse, Rat, Rabbit, Zebrafish, Dog, Horse, Bovine
Predicted	Human, Mouse, Rabbit, Chicken, Dog, Horse, Bovine
Host	Rabbit
Clonality	Polyclonal
Calculated MW	39 KDa

Additional Information

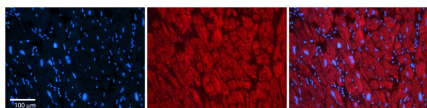
Alias Symbol	AKR6A5, HKvbeta2, HKvbeta2.1, HKvbeta2.2, KCNA2B, KV-BETA-2, MGC117289
Format	Liquid. Purified antibody supplied in 1x PBS buffer with 0.09% (w/v) sodium azide and 2% sucrose.
Reconstitution & Storage	Add 50 ul of distilled water. Final anti-KCNAB2 antibody concentration is 1 mg/ml in PBS buffer with 2% sucrose. For longer periods of storage, store at 20°C. Avoid repeat freeze-thaw cycles.
Precautions	KCNAB2 antibody - middle region is for research use only and not for use in diagnostic or therapeutic procedures.

Protein Information

References

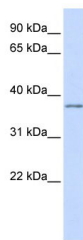
Lim,J., (2006) Cell 125 (4), 801-814 Reconstitution and Storage:For short term use, store at 2-8C up to 1 week. For long term storage, store at -20C in small aliquots to prevent freeze-thaw cycles.

Images



Rabbit Anti-KCNAB2 Antibody
Catalog Number: AI10840
Formalin Fixed Paraffin Embedded Tissue: Human Adult heart
Observed Staining: Cytoplasmic
Primary Antibody
Concentration: 1:600
Secondary Antibody: Donkey anti-Rabbit-Cy2/3

Secondary Antibody
Concentration: 1:200
Magnification: 20X
Exposure Time: 0.5 – 2.0 sec
Protocol located in Reviews and Data.



WB Suggested Anti-KCNAB2 Antibody Titration: 0.2-1
µg/ml
ELISA Titer: 1:2500
Positive Control: Jurkat cell lysate
KCNAB2 is strongly supported by BioGPS gene expression
data to be expressed in Human Jurkat cells

Please note: All products are 'FOR RESEARCH USE ONLY. NOT FOR USE IN DIAGNOSTIC OR THERAPEUTIC PROCEDURES'.