

KCNAB2 antibody - C-terminal region

Rabbit Polyclonal Antibody

Catalog # AI10841

Product Information

Application	WB
Primary Accession	Q13303-2
Other Accession	NM_172130 , NP_742128
Reactivity	Human, Mouse, Rat, Rabbit, Zebrafish, Dog, Horse, Bovine
Predicted	Human, Mouse, Rabbit, Chicken, Dog, Horse, Bovine
Host	Rabbit
Clonality	Polyclonal
Calculated MW	39 KDa

Additional Information

Alias Symbol	AKR6A5, KCNA2B, HKvbeta2, KV-BETA-2, HKvbeta2.1, HKvbeta2.2
Format	Liquid. Purified antibody supplied in 1x PBS buffer with 0.09% (w/v) sodium azide and 2% sucrose.
Reconstitution & Storage	Add 100 ul of distilled water. Final anti-KCNAB2 antibody concentration is 1 mg/ml in PBS buffer with 2% sucrose. For longer periods of storage, store at 20°C. Avoid repeat freeze-thaw cycles.
Precautions	KCNAB2 antibody - C-terminal region is for research use only and not for use in diagnostic or therapeutic procedures.

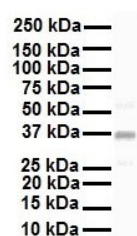
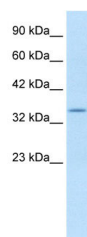
Protein Information

References

Gu, C., et al., (2003) Science 301(5633), 646-9
Reconstitution and Storage: For short term use, store at 2-8°C up to 1 week. For long term storage, store at -20°C in small aliquots to prevent freeze-thaw cycles.

Images

WB Suggested Anti-KCNAB2 Antibody Titration: 1.25 µg/ml
ELISA Titer: 1:1562500
Positive Control: HepG2 cell lysate



WB Suggested Anti-KCNAB2 antibody Titration: 1 µg/ml
Sample Type: Human HepG2

Please note: All products are 'FOR RESEARCH USE ONLY. NOT FOR USE IN DIAGNOSTIC OR THERAPEUTIC PROCEDURES'.