

# KCNH6 antibody - middle region

Rabbit Polyclonal Antibody

Catalog # AI10847

## Product Information

<b>Application</b>	WB
<b>Primary Accession</b>	<a href="#">Q9H252</a>
<b>Other Accession</b>	<a href="#">NM_030779</a> , <a href="#">NP_110406</a>
<b>Reactivity</b>	Human, Mouse, Rat, Rabbit, Zebrafish, Dog, Horse, Bovine
<b>Predicted</b>	Human, Mouse, Rat, Rabbit, Zebrafish, Pig, Dog, Horse, Bovine
<b>Host</b>	Rabbit
<b>Clonality</b>	Polyclonal
<b>Calculated MW</b>	106425

## Additional Information

<b>Gene ID</b>	81033
<b>Alias Symbol</b>	ERG2, HERG2, Kv11.2
<b>Other Names</b>	Potassium voltage-gated channel subfamily H member 6, Ether-a-go-go-related gene potassium channel 2, ERG-2, Eag-related protein 2, Ether-a-go-go-related protein 2, hERG-2, hERG2, Voltage-gated potassium channel subunit Kv11.2, KCNH6, ERG2
<b>Format</b>	Liquid. Purified antibody supplied in 1x PBS buffer with 0.09% (w/v) sodium azide and 2% sucrose.
<b>Reconstitution &amp; Storage</b>	Add 50 ul of distilled water. Final anti-KCNH6 antibody concentration is 1 mg/ml in PBS buffer with 2% sucrose. For longer periods of storage, store at 20°C. Avoid repeat freeze-thaw cycles.
<b>Precautions</b>	KCNH6 antibody - middle region is for research use only and not for use in diagnostic or therapeutic procedures.

## Protein Information

<b>Name</b>	KCNH6 ( <a href="#">HGNC:18862</a> )
<b>Synonyms</b>	ERG2
<b>Function</b>	Pore-forming (alpha) subunit of voltage-gated inwardly rectifying potassium channel. Characterized by unusual gating kinetics by producing relatively small outward currents during membrane depolarization and large inward currents during subsequent repolarization which reflect a rapid inactivation during depolarization and quick recovery from inactivation but slow deactivation (closing) during repolarization. Activates even more slowly than

KCNH2.

**Cellular Location**

Cell membrane {ECO:0000250|UniProtKB:Q12809}; Multi-pass membrane protein {ECO:0000250|UniProtKB:Q12809}

**Tissue Location**

Expressed in prolactin-secreting adenomas.

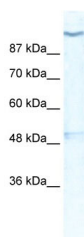
## References

---

Bauer,C.K., et al., (2003) Pflugers Arch. 445 (5), 589-600  
Reconstitution and Storage:For short term use, store at 2-8C up to 1 week. For long term storage, store at -20C in small aliquots to prevent freeze-thaw cycles.

## Images

---



WB Suggested Anti-KCNH6 Antibody Titration: 0.2-1 µg/ml  
ELISA Titer: 1:12500  
Positive Control: HepG2 cell lysate

Please note: All products are 'FOR RESEARCH USE ONLY. NOT FOR USE IN DIAGNOSTIC OR THERAPEUTIC PROCEDURES'.