

# KCNIP2 antibody - middle region

Rabbit Polyclonal Antibody

Catalog # AI10849

## Product Information

Application	WB
Primary Accession	<a href="#">Q9NS61</a>
Other Accession	<a href="#">NM_173191</a> , <a href="#">NP_775283</a>
Reactivity	Human, Mouse, Rat, Rabbit, Zebrafish, Pig, Dog, Horse, Bovine
Predicted	Human, Mouse, Rat, Rabbit, Pig, Chicken, Bovine
Host	Rabbit
Clonality	Polyclonal
Calculated MW	30907

## Additional Information

Gene ID	30819
Alias Symbol	DKFZp566L1246, KCHIP2, MGC17241
Other Names	Kv channel-interacting protein 2, KChIP2, A-type potassium channel modulatory protein 2, Cardiac voltage-gated potassium channel modulatory subunit, Potassium channel-interacting protein 2, KCNIP2, KCHIP2
Format	Liquid. Purified antibody supplied in 1x PBS buffer with 0.09% (w/v) sodium azide and 2% sucrose.
Reconstitution & Storage	Add 50 ul of distilled water. Final anti-KCNIP2 antibody concentration is 1 mg/ml in PBS buffer with 2% sucrose. For longer periods of storage, store at 20°C. Avoid repeat freeze-thaw cycles.
Precautions	KCNIP2 antibody - middle region is for research use only and not for use in diagnostic or therapeutic procedures.

## Protein Information

Name	KCNIP2 ( <a href="#">HGNC:15522</a> )
Function	Regulatory subunit of Kv4/D (Shal)-type voltage-gated rapidly inactivating A-type potassium channels (PubMed: <a href="#">10676964</a> , PubMed: <a href="#">11287421</a> , PubMed: <a href="#">11684073</a> , PubMed: <a href="#">12297301</a> , PubMed: <a href="#">14623880</a> , PubMed: <a href="#">34997220</a> ). Modulates channel density, inactivation kinetics and rate of recovery from inactivation in a calcium-dependent and isoform- specific manner (PubMed: <a href="#">10676964</a> , PubMed: <a href="#">11287421</a> , PubMed: <a href="#">11684073</a> , PubMed: <a href="#">12297301</a> , PubMed: <a href="#">14623880</a> , PubMed: <a href="#">34997220</a> ). Involved in KCND2 and KCND3 trafficking to the cell surface (PubMed: <a href="#">12829703</a> ). May be required for the expression of I(To) currents in the heart (By similarity).

<b>Cellular Location</b>	[Isoform 1]: Cell membrane {ECO:0000250 UniProtKB:Q9JM59}; Lipid-anchor {ECO:0000250 UniProtKB:Q9JM59}. Note=Detected on lipid rafts (By similarity). {ECO:0000250 UniProtKB:Q9JM59} [Isoform 6]: Cell membrane {ECO:0000250 UniProtKB:Q9JM59}; Lipid-anchor {ECO:0000250 UniProtKB:Q9JM59}
<b>Tissue Location</b>	Expressed in brain. Colocalizes with KCND2 in excitatory neurons including cortical and hippocampal CA1 pyramidal cells. Isoform 3 is expressed in heart and in umbilical vein endothelial cells. Not expressed in fetal heart

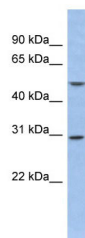
## References

---

Han,W., (2006) J. Biol. Chem. 281 (37), 27134-27144 Reconstitution and Storage:For short term use, store at 2-8C up to 1 week. For long term storage, store at -20C in small aliquots to prevent freeze-thaw cycles.

## Images

---



WB Suggested Anti-KCNIP2 Antibody Titration: 0.2-1  
 µg/ml  
 ELISA Titer: 1:312500  
 Positive Control: Human Stomach

Please note: All products are 'FOR RESEARCH USE ONLY. NOT FOR USE IN DIAGNOSTIC OR THERAPEUTIC PROCEDURES'.