

MED21 antibody - C-terminal region

Rabbit Polyclonal Antibody

Catalog # AI10874

Product Information

Application	WB
Primary Accession	Q13503
Other Accession	NM_004264 , NP_004255
Reactivity	Human, Mouse, Rat, Pig, Dog, Horse, Bovine
Predicted	Human, Mouse, Rat, Rabbit, Pig, Chicken, Dog, Horse, Bovine
Host	Rabbit
Clonality	Polyclonal
Calculated MW	15564

Additional Information

Gene ID	9412
Alias Symbol	SRB7, SURB7
Other Names	Mediator of RNA polymerase II transcription subunit 21, Mediator complex subunit 21, RNA polymerase II holoenzyme component SRB7, RNAPII complex component SRB7, hSrb7, MED21, SRB7, SURB7
Format	Liquid. Purified antibody supplied in 1x PBS buffer with 0.09% (w/v) sodium azide and 2% sucrose.
Reconstitution & Storage	Add 50 ul of distilled water. Final anti-MED21 antibody concentration is 1 mg/ml in PBS buffer with 2% sucrose. For longer periods of storage, store at 20°C. Avoid repeat freeze-thaw cycles.
Precautions	MED21 antibody - C-terminal region is for research use only and not for use in diagnostic or therapeutic procedures.

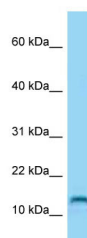
Protein Information

Name	MED21
Synonyms	SRB7, SURB7
Function	Component of the Mediator complex, a coactivator involved in the regulated transcription of nearly all RNA polymerase II-dependent genes. Mediator functions as a bridge to convey information from gene-specific regulatory proteins to the basal RNA polymerase II transcription machinery. Mediator is recruited to promoters by direct interactions with regulatory proteins and serves as a scaffold for the assembly of a functional preinitiation complex with RNA polymerase II and the general transcription factors.

Cellular Location

Nucleus.

Images



WB Suggested Anti-MED21 Antibody Titration: 1.0 µg/ml
Positive Control: Hela Whole Cell
MED21 is strongly supported by BioGPS gene expression data to be expressed in Human HeLa cells

Please note: All products are 'FOR RESEARCH USE ONLY. NOT FOR USE IN DIAGNOSTIC OR THERAPEUTIC PROCEDURES'.