

Dlx6 antibody - C-terminal region

Rabbit Polyclonal Antibody

Catalog # AI10875

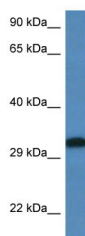
Product Information

Application	WB
Other Accession	XM_575377 , XP_575377
Reactivity	Human, Mouse, Rat, Rabbit, Zebrafish, Dog, Horse, Bovine
Predicted	Mouse, Rabbit, Zebrafish, Chicken, Bovine
Host	Rabbit
Clonality	Polyclonal
Calculated MW	30 kDa

Additional Information

Alias Symbol	RGD1561539
Format	Liquid. Purified antibody supplied in 1x PBS buffer with 0.09% (w/v) sodium azide and 2% sucrose.
Reconstitution & Storage	Add 50 ul of distilled water. Final anti-Dlx6 antibody concentration is 1 mg/ml in PBS buffer with 2% sucrose. For longer periods of storage, store at 20°C. Avoid repeat freeze-thaw cycles.
Precautions	Dlx6 antibody - C-terminal region is for research use only and not for use in diagnostic or therapeutic procedures.

Images



WB Suggested Anti-Dlx6 Antibody Titration: 1.0 µg/ml
Positive Control: Rat Muscle

Please note: All products are 'FOR RESEARCH USE ONLY. NOT FOR USE IN DIAGNOSTIC OR THERAPEUTIC PROCEDURES'.