

# HMGB3 antibody - C-terminal region

Rabbit Polyclonal Antibody  
Catalog # AI10876

## Product Information

---

<b>Application</b>	WB, IHC
<b>Primary Accession</b>	<a href="#">O15347</a>
<b>Other Accession</b>	<a href="#">NM_005342</a> , <a href="#">NP_005333</a>
<b>Reactivity</b>	Human, Mouse, Rat, Rabbit, Zebrafish, Pig, Dog, Horse, Bovine
<b>Predicted</b>	Human, Mouse, Rat, Rabbit, Zebrafish, Chicken, Bovine
<b>Host</b>	Rabbit
<b>Clonality</b>	Polyclonal
<b>Calculated MW</b>	23 KDa

## Additional Information

---

<b>Alias Symbol</b>	HMG4, HMG-4, HMG2A, HMG-2a
<b>Other Names</b>	High mobility group protein B3, High mobility group protein 2a, HMG-2a, High mobility group protein 4, HMG-4, HMGB3, HMG2A, HMG4
<b>Format</b>	Liquid. Purified antibody supplied in 1x PBS buffer with 0.09% (w/v) sodium azide and 2% sucrose.
<b>Reconstitution &amp; Storage</b>	Add 100 ul of distilled water. Final anti-HMGB3 antibody concentration is 1 mg/ml in PBS buffer with 2% sucrose. For longer periods of storage, store at 20°C. Avoid repeat freeze-thaw cycles.
<b>Precautions</b>	HMGB3 antibody - C-terminal region is for research use only and not for use in diagnostic or therapeutic procedures.

## Protein Information

---

## References

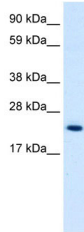
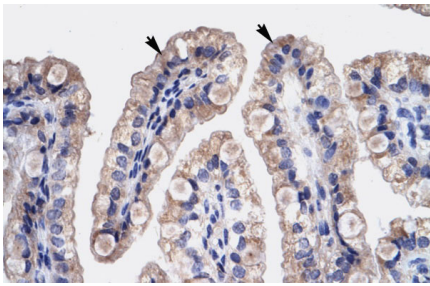
---

Vaccari,T., et al., (1998) Genomics 49 (2), 247-252  
Reconstitution and Storage:For short term use, store at 2-8C up to 1 week. For long term storage, store at -20C in small aliquots to prevent freeze-thaw cycles.

## Images

---

Human Intestine



WB Suggested Anti-HMGB3 Antibody Titration: 0.3 $\mu$ g/ml  
ELISA Titer: 1:312500  
Positive Control: Human Placenta

Please note: All products are 'FOR RESEARCH USE ONLY. NOT FOR USE IN DIAGNOSTIC OR THERAPEUTIC PROCEDURES'.