

# SCAND1 antibody - middle region

Rabbit Polyclonal Antibody

Catalog # AI10910

## Product Information

---

<b>Application</b>	WB
<b>Primary Accession</b>	<a href="#">P57086</a>
<b>Other Accession</b>	<a href="#">NM_016558</a> , <a href="#">NP_057642</a>
<b>Reactivity</b>	Human, Pig
<b>Predicted</b>	Human
<b>Host</b>	Rabbit
<b>Clonality</b>	Polyclonal
<b>Calculated MW</b>	19082

## Additional Information

---

<b>Gene ID</b>	51282
<b>Alias Symbol</b>	RAZ1, SDP1
<b>Other Names</b>	SCAN domain-containing protein 1, SCAND1, SDP1
<b>Format</b>	Liquid. Purified antibody supplied in 1x PBS buffer with 0.09% (w/v) sodium azide and 2% sucrose.
<b>Reconstitution &amp; Storage</b>	Add 50 ul of distilled water. Final anti-SCAND1 antibody concentration is 1 mg/ml in PBS buffer with 2% sucrose. For longer periods of storage, store at 20°C. Avoid repeat freeze-thaw cycles.
<b>Precautions</b>	SCAND1 antibody - middle region is for research use only and not for use in diagnostic or therapeutic procedures.

## Protein Information

---

<b>Name</b>	SCAND1
<b>Synonyms</b>	SDP1
<b>Function</b>	May regulate transcriptional activity.
<b>Cellular Location</b>	Nucleus {ECO:0000255 PROSITE-ProRule:PRU00187}.

## References

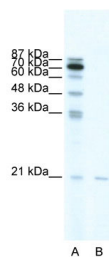
---

Carneiro,F.R., et al., (2006) Biochem. Biophys. Res. Commun. 343 (1), 260-268Reconstitution and Storage:For

short term use, store at 2-8C up to 1 week. For long term storage, store at -20C in small aliquots to prevent freeze-thaw cycles.

## Images

---



WB Suggested Anti-SCAND1 Antibody Titration: 0.2-1  
µg/ml

ELISA Titer: 1:62500

Positive Control: HepG2 cell lysate

SCAND1 is supported by BioGPS gene expression data to  
be expressed in HepG2

Please note: All products are 'FOR RESEARCH USE ONLY. NOT FOR USE IN DIAGNOSTIC OR THERAPEUTIC PROCEDURES'.