

# FEV Antibody - C-terminal region

Rabbit Polyclonal Antibody

Catalog # AI10912

## Product Information

---

<b>Application</b>	WB
<b>Primary Accession</b>	<a href="#">Q99581</a>
<b>Other Accession</b>	<a href="#">NM_017521</a> , <a href="#">NP_059991</a>
<b>Reactivity</b>	Human, Mouse, Rat, Rabbit, Bovine
<b>Predicted</b>	Mouse, Rat, Rabbit
<b>Host</b>	Rabbit
<b>Clonality</b>	Polyclonal
<b>Calculated MW</b>	25030

## Additional Information

---

<b>Gene ID</b>	54738
<b>Alias Symbol</b>	HSRNAFEV, PET-1
<b>Other Names</b>	Protein FEV, Fifth Ewing variant protein, PC12 ETS domain-containing transcription factor 1, PC12 ETS factor 1, Pet-1, FEV, PET1
<b>Format</b>	Liquid. Purified antibody supplied in 1x PBS buffer with 0.09% (w/v) sodium azide and 2% sucrose.
<b>Reconstitution &amp; Storage</b>	Add 50 µl of distilled water. Final Anti-FEV antibody concentration is 1 mg/ml in PBS buffer with 2% sucrose. For longer periods of storage, store at -20°C. Avoid repeat freeze-thaw cycles.
<b>Precautions</b>	FEV Antibody - C-terminal region is for research use only and not for use in diagnostic or therapeutic procedures.

## Protein Information

---

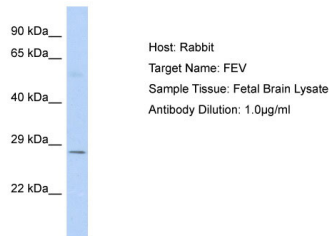
<b>Name</b>	FEV
<b>Synonyms</b>	PET1
<b>Function</b>	Functions as a transcriptional regulator. According to PubMed: <a href="#">12761502</a> , it functions as a transcriptional repressor. Functions in the differentiation and the maintenance of the central serotonergic neurons. May play a role in cell growth.
<b>Cellular Location</b>	Nucleus {ECO:0000255   PROSITE-ProRule:PRU00237, ECO:0000269   PubMed:12761502}

**Tissue Location**

In brain, exclusively expressed in the major serotonergic neurons of the dorsal and median raphe nuclei located in the midbrain and pons. Also detected in prostate and small intestine

**Images**

---



Host: Rabbit  
Target Name: FEV  
Sample Tissue: Fetal Brain lysates  
Antibody Dilution: 1.0µg/ml

Please note: All products are 'FOR RESEARCH USE ONLY. NOT FOR USE IN DIAGNOSTIC OR THERAPEUTIC PROCEDURES'.