

# EBF2 antibody - C-terminal region

Rabbit Polyclonal Antibody

Catalog # AI10923

## Product Information

---

<b>Application</b>	WB
<b>Primary Accession</b>	<a href="#">Q9HAK2</a>
<b>Other Accession</b>	<a href="#">XM_939691</a> , <a href="#">XP_944784</a>
<b>Reactivity</b>	Human, Mouse, Rat, Rabbit, Pig, Dog, Horse, Bovine
<b>Predicted</b>	Human, Rat, Pig, Chicken, Dog, Horse
<b>Host</b>	Rabbit
<b>Clonality</b>	Polyclonal
<b>Calculated MW</b>	62650

## Additional Information

---

<b>Gene ID</b>	64641
<b>Alias Symbol</b>	COE2, EBF-2, FLJ11500, O/E-3, OE-3
<b>Other Names</b>	Transcription factor COE2, Early B-cell factor 2, EBF-2, EBF2, COE2
<b>Format</b>	Liquid. Purified antibody supplied in 1x PBS buffer with 0.09% (w/v) sodium azide and 2% sucrose.
<b>Reconstitution &amp; Storage</b>	Add 100 ul of distilled water. Final anti-EBF2 antibody concentration is 1 mg/ml in PBS buffer with 2% sucrose. For longer periods of storage, store at 20°C. Avoid repeat freeze-thaw cycles.
<b>Precautions</b>	EBF2 antibody - C-terminal region is for research use only and not for use in diagnostic or therapeutic procedures.

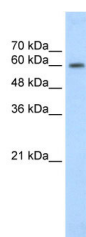
## Protein Information

---

<b>Name</b>	EBF2
<b>Synonyms</b>	COE2
<b>Function</b>	Transcription factor that, in osteoblasts, activates the decoy receptor for RANKL, TNFRSF11B, which in turn regulates osteoclast differentiation. Acts in synergy with the Wnt-responsive LEF1/CTNNB1 pathway. Recognizes variations of the palindromic sequence 5'- ATTCCCNNGGGAATT-3' (By similarity).
<b>Cellular Location</b>	Nucleus.

## Images

---



WB Suggested Anti-EBF2 Antibody Titration: 1.25µg/ml  
Positive Control: HepG2 cell lysate

Please note: All products are 'FOR RESEARCH USE ONLY. NOT FOR USE IN DIAGNOSTIC OR THERAPEUTIC PROCEDURES'.