

EBF2 antibody - middle region

Rabbit Polyclonal Antibody

Catalog # AI10924

Product Information

Application	WB
Primary Accession	Q9HAK2
Other Accession	NM_022659 , NP_073150
Reactivity	Human, Mouse, Rat, Rabbit, Zebrafish, Pig, Dog, Horse, Bovine
Predicted	Human, Rat, Pig, Chicken, Dog, Horse
Host	Rabbit
Clonality	Polyclonal
Calculated MW	62650

Additional Information

Gene ID	64641
Alias Symbol	COE2, EBF-2, FLJ11500, O/E-3, OE-3
Other Names	Transcription factor COE2, Early B-cell factor 2, EBF-2, EBF2, COE2
Format	Liquid. Purified antibody supplied in 1x PBS buffer with 0.09% (w/v) sodium azide and 2% sucrose.
Reconstitution & Storage	Add 50 ul of distilled water. Final anti-EBF2 antibody concentration is 1 mg/ml in PBS buffer with 2% sucrose. For longer periods of storage, store at 20°C. Avoid repeat freeze-thaw cycles.
Precautions	EBF2 antibody - middle region is for research use only and not for use in diagnostic or therapeutic procedures.

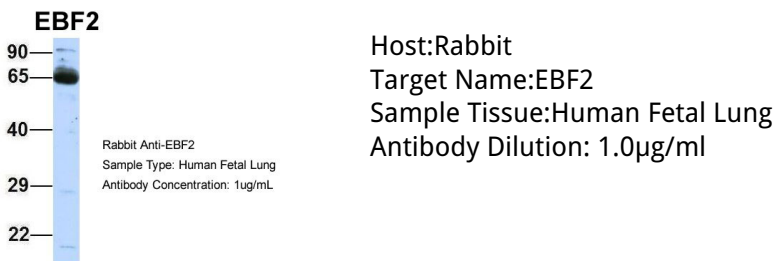
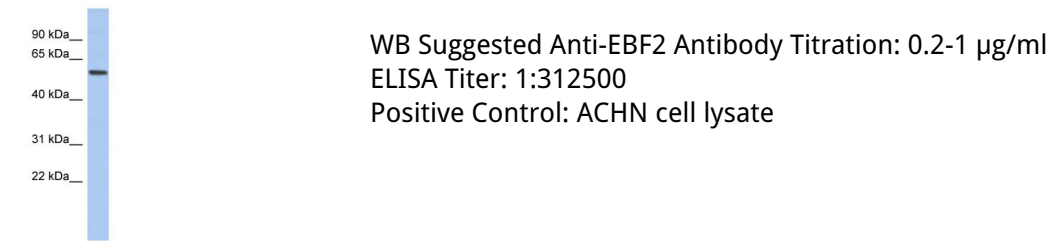
Protein Information

Name	EBF2
Synonyms	COE2
Function	Transcription factor that, in osteoblasts, activates the decoy receptor for RANKL, TNFRSF11B, which in turn regulates osteoclast differentiation. Acts in synergy with the Wnt-responsive LEF1/CTNNB1 pathway. Recognizes variations of the palindromic sequence 5'- ATTCCCNNGGGAATT-3' (By similarity).
Cellular Location	Nucleus.

References

Nusbaum,C., (2006) Nature 439 (7074), 331-335 Reconstitution and Storage:For short term use, store at 2-8C up to 1 week. For long term storage, store at -20C in small aliquots to prevent freeze-thaw cycles.

Images



Please note: All products are 'FOR RESEARCH USE ONLY. NOT FOR USE IN DIAGNOSTIC OR THERAPEUTIC PROCEDURES'.