

DHX16 antibody - N-terminal region

Rabbit Polyclonal Antibody

Catalog # AI10968

Product Information

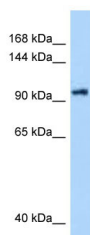
Application	WB
Primary Accession	B4DZ28
Other Accession	NM_001164239 , NP_001157711
Reactivity	Human, Mouse, Rat, Rabbit, Zebrafish, Pig, Goat, Dog, Horse, Bovine, Yeast
Predicted	Mouse, Rat, Rabbit, Zebrafish, Pig, Dog, Bovine
Host	Rabbit
Clonality	Polyclonal
Calculated MW	107 KDa

Additional Information

Alias Symbol	DBP2, DDX16, PRO2014, PRP8, PRPF2, Prp2
Format	Liquid. Purified antibody supplied in 1x PBS buffer with 0.09% (w/v) sodium azide and 2% sucrose.
Reconstitution & Storage	Add 50 ul of distilled water. Final anti-DHX16 antibody concentration is 1 mg/ml in PBS buffer with 2% sucrose. For longer periods of storage, store at 20°C. Avoid repeat freeze-thaw cycles.
Precautions	DHX16 antibody - N-terminal region is for research use only and not for use in diagnostic or therapeutic procedures.

Protein Information

Images



WB Suggested Anti-DHX16 Antibody Titration: 0.25 µg/ml
Positive Control: PANC1 Whole Cell