

AES antibody - C-terminal region

Rabbit Polyclonal Antibody

Catalog # AI10997

Product Information

Application	WB
Primary Accession	Q08117
Other Accession	NM_001130 , NP_001121
Reactivity	Human, Mouse, Rat, Bovine
Predicted	Human, Mouse, Rat, Dog, Bovine
Host	Rabbit
Clonality	Polyclonal
Calculated MW	21970

Additional Information

Gene ID	166
Alias Symbol	AES-1, AES-2, ESP1, GRG, GRG5, TLE5
Other Names	Amino-terminal enhancer of split, Amino enhancer of split, Gp130-associated protein GAM, Grg-5, Groucho-related protein 5, Protein ESP1, Protein GRG, AES, GRG, GRG5
Format	Liquid. Purified antibody supplied in 1x PBS buffer with 0.09% (w/v) sodium azide and 2% sucrose.
Reconstitution & Storage	Add 100 ul of distilled water. Final anti-AES antibody concentration is 1 mg/ml in PBS buffer with 2% sucrose. For longer periods of storage, store at 20°C. Avoid repeat freeze-thaw cycles.
Precautions	AES antibody - C-terminal region is for research use only and not for use in diagnostic or therapeutic procedures.

Protein Information

Name	TLE5 (HGNC:307)
Synonyms	AES, GRG, GRG5
Function	Transcriptional corepressor. Acts as a dominant repressor towards other family members. Inhibits NF-kappa-B-regulated gene expression. May be required for the initiation and maintenance of the differentiated state. Essential for the transcriptional repressor activity of SIX3 during retina and lens development.
Cellular Location	Nucleus.

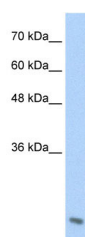
Tissue Location

Found predominantly in muscle, heart and Placenta. In fetal tissues, abundantly expressed in the heart, lung, kidney, brain and liver

References

Jan,Y., (2004) Cell 116 (5), 751-762
Reconstitution and Storage: For short term use, store at 2-8C up to 1 week. For long term storage, store at -20C in small aliquots to prevent freeze-thaw cycles.

Images



WB Suggested Anti-AES Antibody Titration: 2.5µg/ml
Positive Control: Jurkat cell lysate
AES is supported by BioGPS gene expression data to be expressed in Jurkat

Please note: All products are 'FOR RESEARCH USE ONLY. NOT FOR USE IN DIAGNOSTIC OR THERAPEUTIC PROCEDURES'.